

Physarum cf. virescens Ditmar

0221

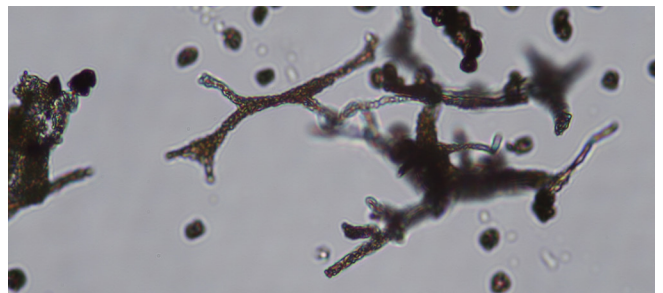
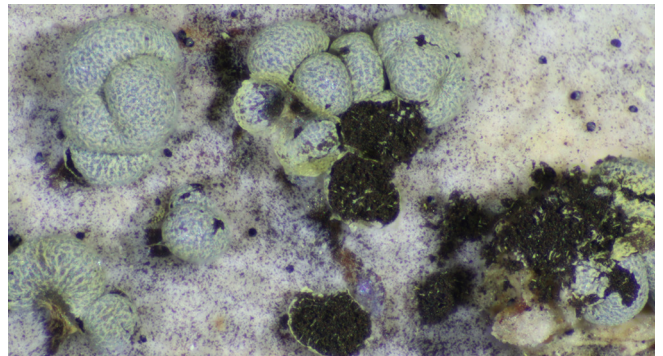
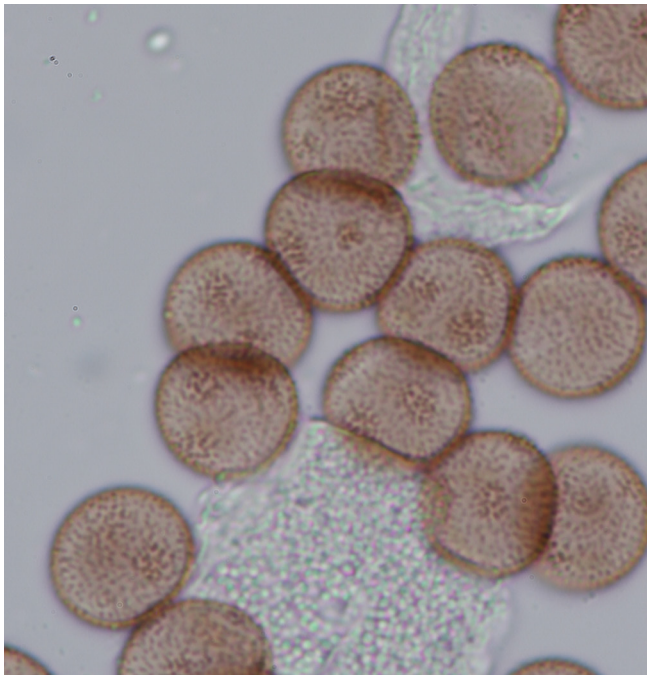
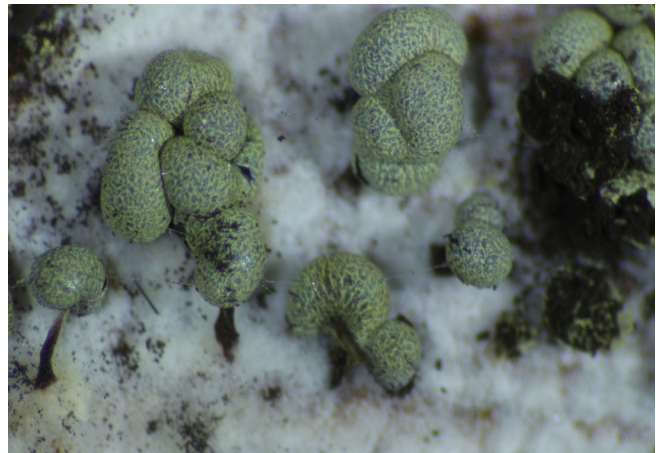
Date 8 Apr. 2014. Black Sugarloaf, Birrale (Thismia gully).

Habitat: Closed wet Eucalypt forest.

Substrate: Decayed (soft, spongy) stag of fallen dead *Eucalyptus obliqua*.

Description: small groups of crowded and heaped stalked sporangia, appearing sessile but some stalked. **Sporotheca** laterally compressed or misshapen by mutual pressure, stalked sporotheca subulate at base. **Stalk** subulate, slightly wrinkled, brown at base, lighter at apex, 0.4 mm long. **Hypothallus** inconspicuous. **Peridium** encrusted with green lime, some crystalline. **Capillitium** fine yellow lime. **Spores:** dark brown in mass, lighter brown by transmitted light, warted with patches of darker warts, 8.5–9.5 μm .

Notes: Keys out to *P. virescens* except for the presence of stalks in some sporangia.



Physarum cf. virescens Ditmar

0308

Date 21 Jan. 2015 Same location and substrate as #0220

above. Most sporangia on spongy part of wood with toothed resupinate fungus. **Description:** Clustered and scattered mostly sessile (some stalked) sporangia, of very variable shape, 0.6 x 0.4 mm diameter. **Stalk** extension of hypothallus, brown. **Hypothallus** membranous, brown. **Peridium** crystalline layer encrusted with green lime.

Capillitium sparse small yellow lime nodes.

Spores: dark brown in mass, lighter brown by transmitted light, warted with patches of darker warts, 7.5–8.5 μm .

Notes Only two collections of this species, both from the same substrate.

