

Date 25 Sept. 2015 Black Sugarloaf, Birralee (big tree track)

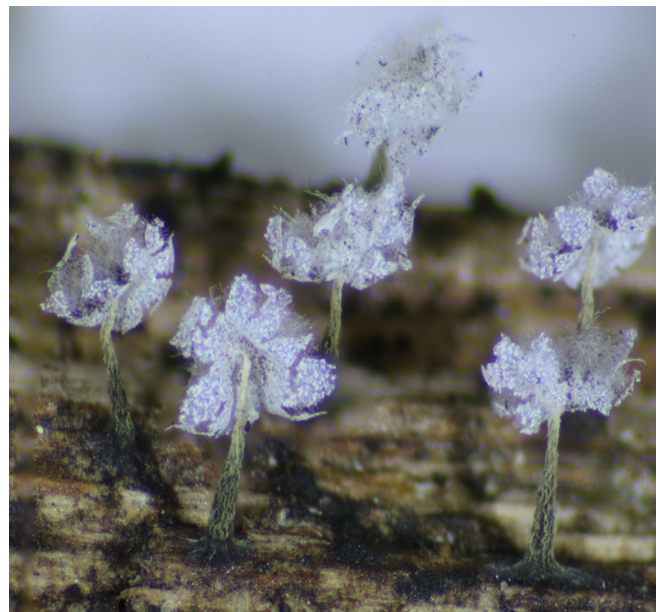
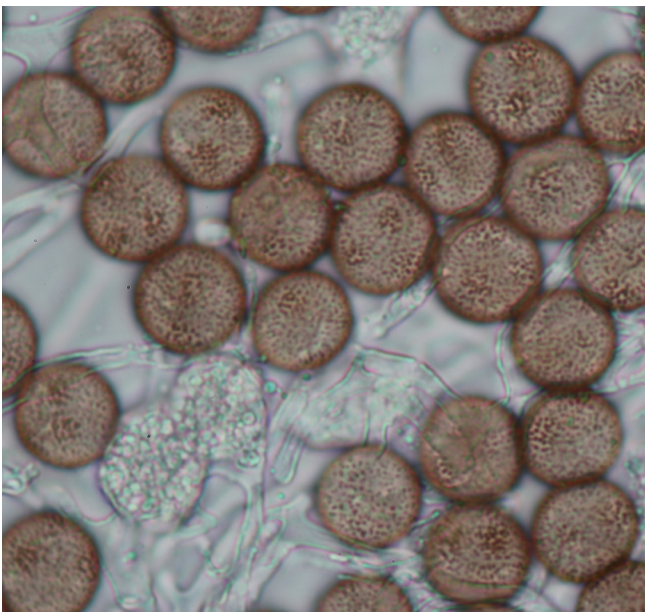
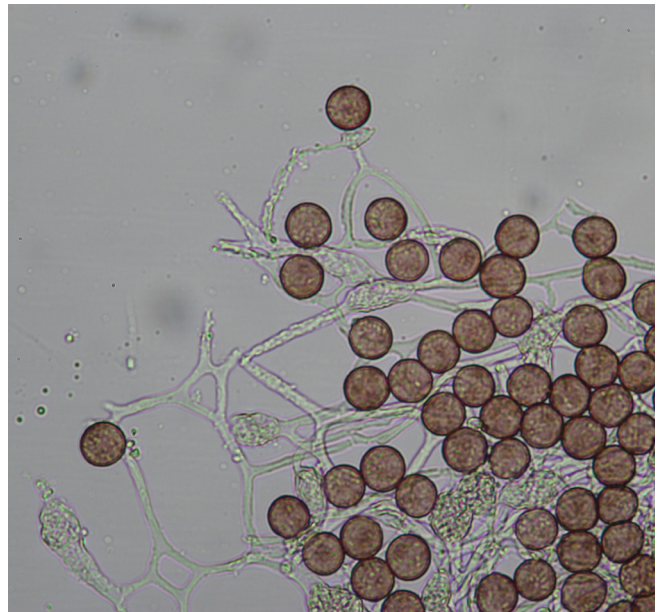
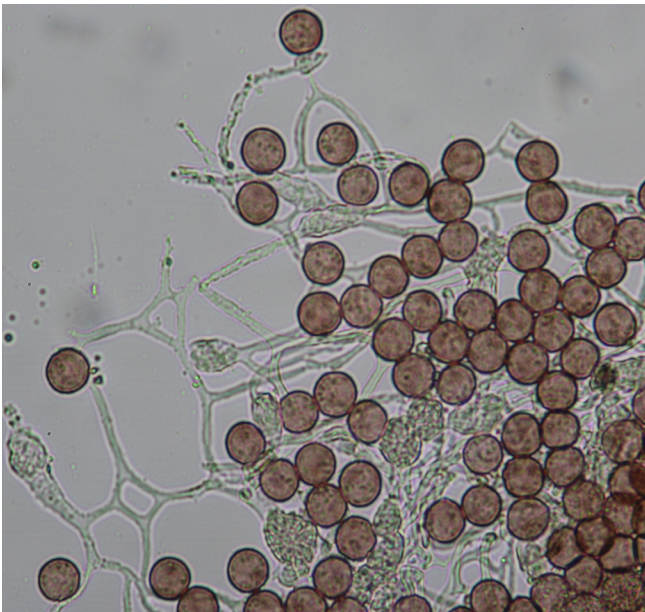
Habitat: Closed wet Eucalypt forest.

Substrate: Decayed *Pomaderris apetala* on ground

Description: Gregarious stalked white sporangia to 0.9 mm high. **Sporotheca** ± globose (slightly flattened at base) erect to slightly nodding. **Stalk** subulate (tapering upwards), longitudinally wrinkled, dark brown at base, light at apex.

Hypothallus continuous under groups, conspicuous, black.

Peridium White, encrusted with lime, breaking into fragments on dehiscence. **Columella** absent. **Capillitium** colourless threads interspersed with white lime nodes. **Spores** black in mass, brown by transmitted light, minutely warted with patches of darker warts, 9–10.5 µm. **Notes:** This is a very common species found in small groups on decayed logs and fallen dead trees. Listed as *P. nutans* in some texts.



Physarum album 12 Aug. 2010 (SJL25) showing peridial fragments in older sporangia.