

Date 26 Nov. 2012 Black Sugarloaf, Birrallee (big tree track).

Habitat: Closed wet Eucalypt forest.

Substrate: Stipe of *Pteridium esculentum* and eucalypt twig.

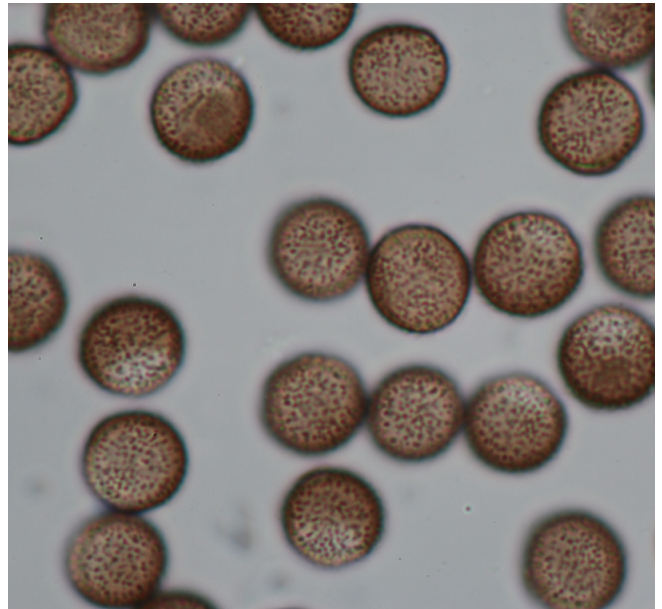
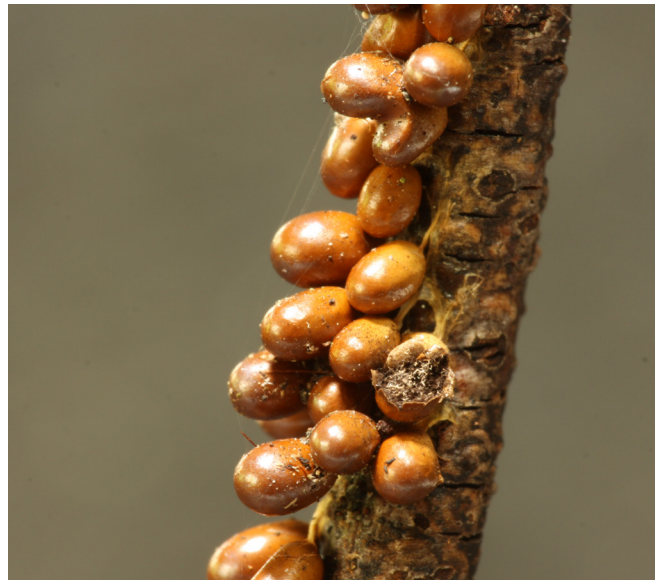
Description Gregarious and clustered short stalked, ovoid, or short cylindric sporangia, 1.8–2.2 mm tall x 0.7 mm diameter, honey brown and chestnut brown. **Stalk** flat, grooved, pale yellow, essentially an extension of the hypothallus.

Hypothallus pale yellow, membranous, merging into stalk.

Peridium brittle, smooth and shiny on the outside, dehiscence irregular or petaloid. Three firmly appressed layers: outer layer cartilaginous and limeless, ochraceous orange; middle layer with lime globules; inner layer colourless, shiny.

Capillitium duplex: a network of colourless flattened tubules and off white lime connected to inner peridial layer. **Spores** black in mass, brown by transmitted light, paler on one side, warted, 12–14 μ m. **Plasmodium** yellow.

Notes: Not common at Black Sugarloaf: photographed but not collected on 3 occasions; 2 collections only.



Leocarpus fragilis plasmodium 30 May 2010



Leocarpus fragilis 30 August 2010