

*Clastoderma debaryanum* A. Blytt

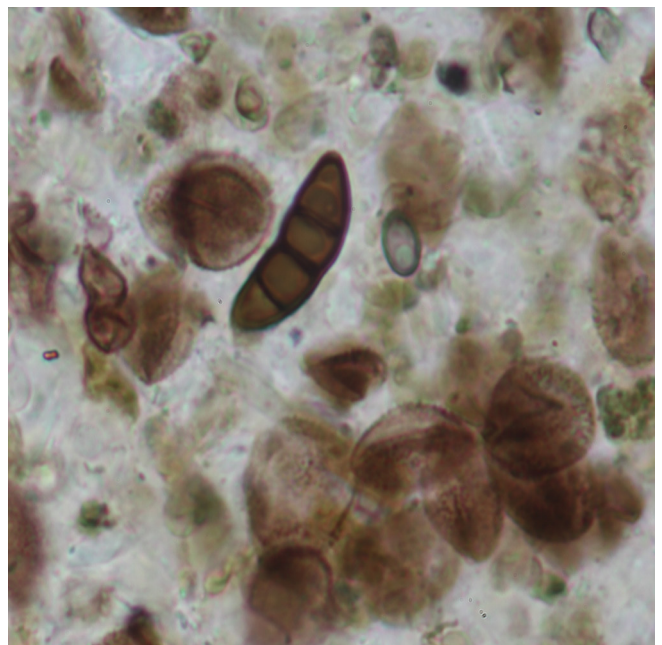
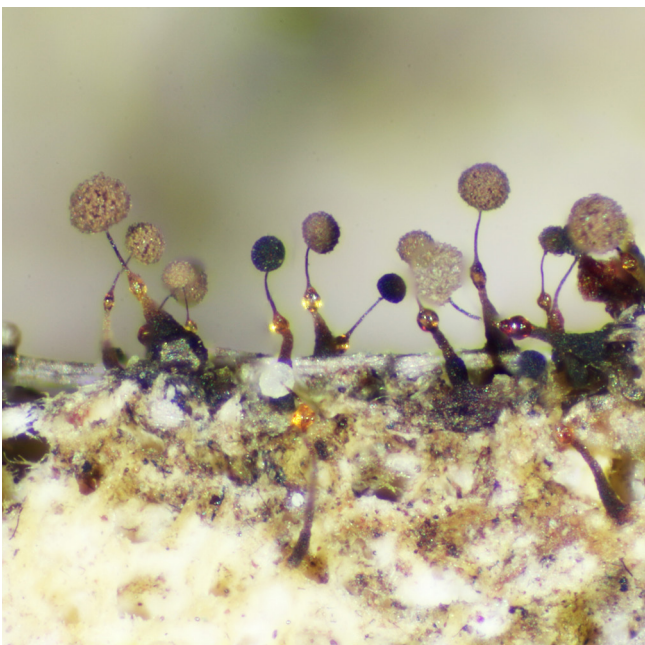
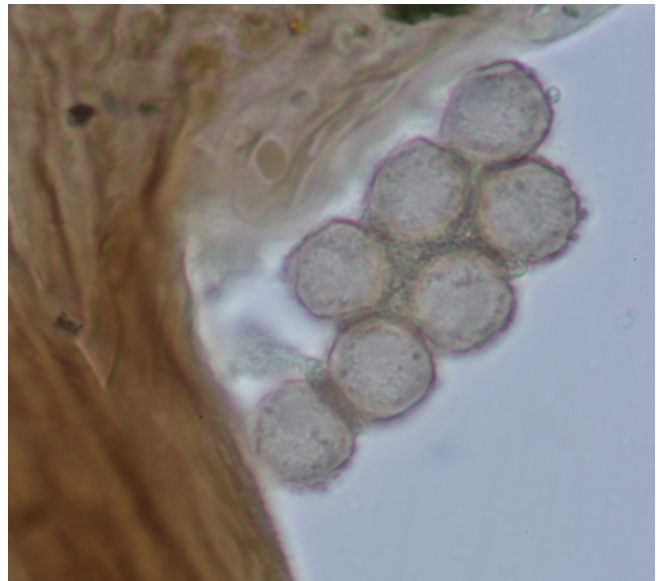
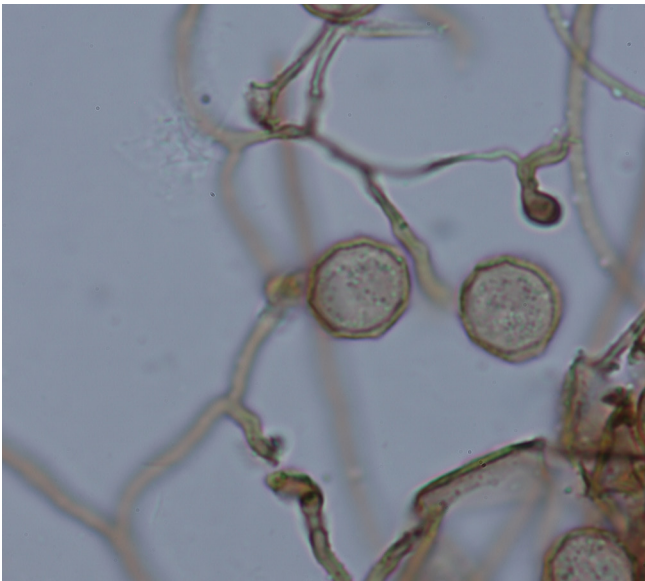
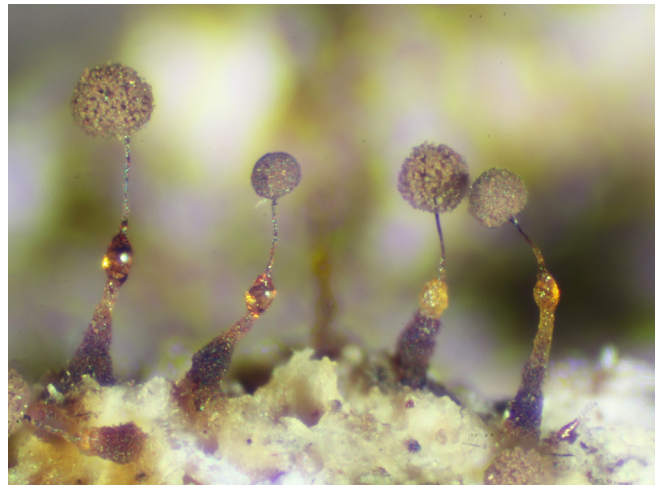
MEL#370 0439

**Date** 2 Sept. 2015. Black Sugarloaf, Birrale (Thismia Gully).

**Habitat:** Closed wet Eucalypt forest.

**Substrate:** Strongly decayed bark of fallen dead *Eucalyptus obliqua*. **Description** extensive colony of scattered stalked sporangia 1–1.3 mm high. **Hypothallus** discoid. **Sporotheca** globose, 0.1–0.3 mm diameter, light brown. **Peridium** fugacious. **Stalk** erect or sometimes bent, oval swelling about  $\frac{2}{3}$  up, black and granular below the swelling, thin above swelling. **Columella** short, divided at apex into several branches. **Capillitium** pale brown threads with some branching; numerous free ends with expanded tips. **Spores** brown in mass, lighter by transmitted light, slightly irregular in outline with faint warts, 8.5–9  $\mu\text{m}$ .

**Notes:** Usually collected from strongly decayed *Pomaderris apetala* on the ground.



Amorphous granules and fungal spores found in swelling on stem.