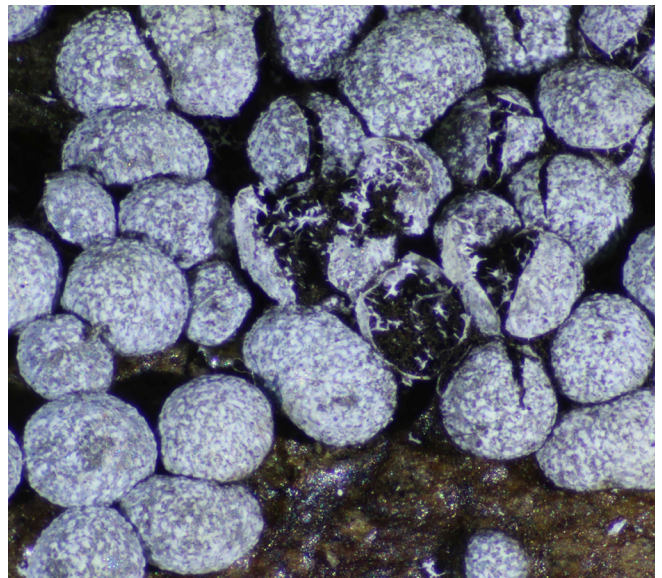
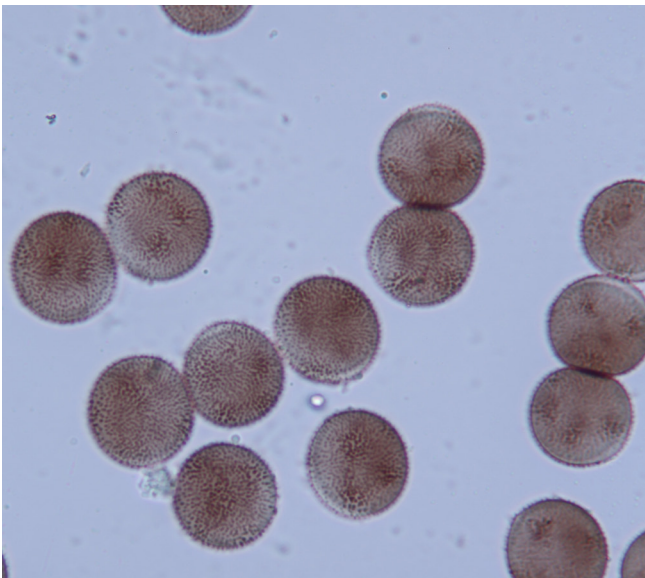
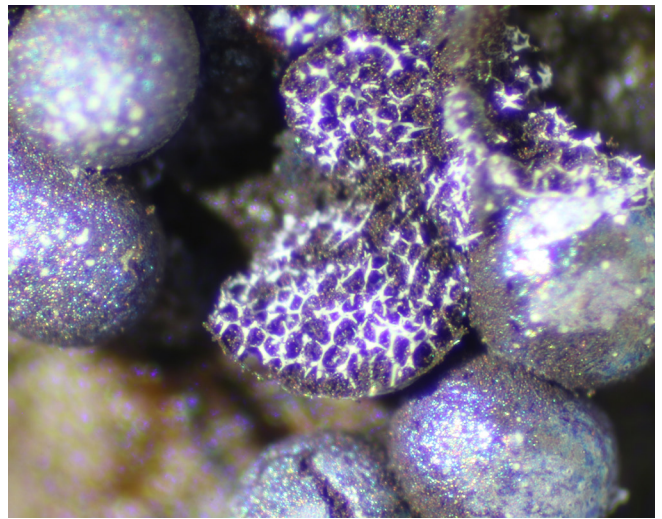
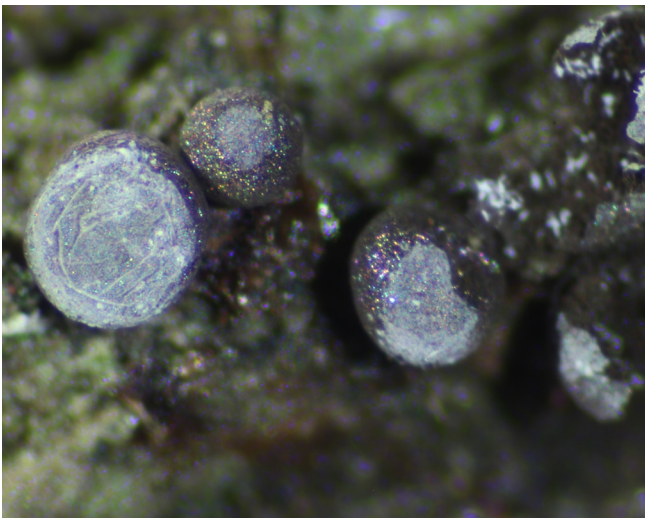
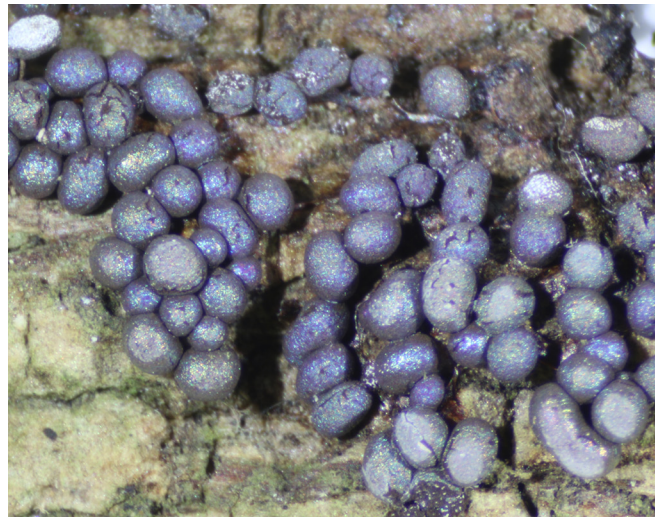


Date 25 May 2014. Black Sugarloaf, Birrale (big tree track).

Habitat: Closed wet Eucalypt forest.

Substrate: Dead *Clematis aristata*. **Description:** Crowded sessile sporangia, globose to short plasmodiocarps. Globose sporangia 0.6–0.9 mm diameter; plasmodiocarps 1.5 mm long x 0.7 mm diameter. **Hypothallus** shiny, reddish brown. **Peridium** membranous, fragile, iridescent with mainly purple reflections; white with thin layer of lime when first collected, some veins of white persist. (Collection from June 2014 has white to cinereous limy peridium - see photo below.)

Columella absent. **Capillitium** network of white limy tubules. **Spores** globose to sub-globose, dark brown in mass, brown by transmitted light, darker on one side and paler on the other, minutely punctate with groups of darker warts, 13–14 μm . **Notes:** Several collections found on dead *Clematis aristata*, some with limy peridium.



7 June 2014 *Badhamia panicea* (#0148) on dead *C. aristata*.