

## Broad-noses: Entiminae

The broad-nosed weevils are usually easily recognised by, unsurprisingly, their **broad** rostrums. They are bigger than the average weevil, but there are a few groups of smaller species, like *Trachyphloeus* and *Cathormiocerus*. A few other weevils have short and broad rostrums, notably *Stenopelmus rufinasus*, *Gronops lunatus*, *Leiosoma*, *Anoplus*, and *Rhyncolus conicus*: they are all easily separated from any of the broad-noses. Many of the broad-noses are found on or in the ground, or on trees, and they are often not too fussy about what they eat. *Sitona* and its relatives are an exception: they are all associated with legumes.

*Sitona* and relatives. These weevils have large eyes, rather **straight sided** and **narrow** elytra, and **short** antennae. They are all associated with legumes. They include some of our commonest weevils: you will find *Sitona lineatus* almost everywhere.

*Charagmus*. Densely covered with **round** scales. Looks velvety.



*Coelositona*. Pronotum **bulging** at the middle and then **pinched in** at the rear. **Hair-scales** only.



*Andrion regensteinense*. Abdomen and pronotum both **oval** and **rounded**. Long front legs. **Spider-like** shape. **Long bristles**.



*Sitona*. Wing-cases rather **straight-sided** and **narrow**. Some have long bristles, but others have none.



*Tanymecus palliatus*. Wing-cases **narrow** and rather **straight-sided**. Long white bristles on the side of the front edge of the pronotum cover the cheeks. [Compare](#) *Sitona* and relatives have longer antennae and they lack the cheek bristles.





*Neliocarus*, *Strophosoma*, *Philopeton plagiatum*, and *Attactagenus plumbeus*. **Small, bulging eyes. Short, flat rostrum.** Wing-cases with rounded sides. [Compare](#) *Sitona* have larger eyes and straighter-sided wing-cases.



*Barypeithes*. **Fine hairs** only, **no** round or oval scales. Wing-cases **glossy** and shining. **Compare** *Omiamima* has a rounder, fatter abdomen and erect scales. *Brachysomus* has some flat scales, some erect paddle scales, and duller wing-cases. *Otiorhynchus* are usually larger, and they have flaring nostrils, fully visible from above. *Otiorhynchus ovatus* and *desertus* (the two species that most resemble *Barypeithes* in size and shape) further differ in that they have a spur on the front femur, and a thickly wrinkled or granulated pronotum.



*Brachysomus*, *Omiamima mollina*, and *Sciaphilus asperatus*. **Erect** scales on wing-cases, which appear **bristly**. Wing-cases **oval**. **Compare** *Barypeithes* have only very fine hairs; they have no bristle-like erect scales. *Trachyphloeus* and *Cathormiocerus* mostly have a broader pronotum and more rectangular wing-cases, and they have wider, paddle-like erect scales rather than bristle-like scales. *Otiorhynchus* are larger and have longer antennae. xxNeed *Omiamima* picture.



*Trachyphloeus*, *Cathormiocerus*, and *Romualdius*. **Erect paddle scales** or broad spines, often with flat, round scales too. **Chunky** with **thick** antennae. **Compare** *Brachysomus* and *Omiamima mollina* have more slender antennae, narrow oval or hair-like flat scales, and usually narrower pronotums and more rounded wing-cases.



*Caenopsis*. **Erect paddle scales**. **Beady** eyes. Bare and shining cheeks furrowed with **wrinkles** (you need to look from the side to see these). Eyes further forward, close to base of antennae.





*Barynotus* and *Tropiphorus*. **Fat** weevils with round or narrow oval, **flat** scales. **Longer** rostrums than many other broad-noses. Rostrum **pinched in** around the middle, wider at the tip. Shoulders **not** prominent. **Compare** *Otiorhynchus* have longer antennae, and round antennal sockets like a pig snout, more or less fully visible from above. This is usually obvious, but a quick glance at each of the *Otiorhynchus* species will show that each differs from the species here in size, shape, sculpture, or scales.





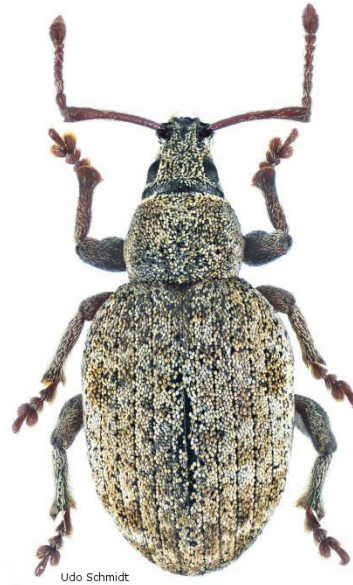
*Liophloeus tessulatus*. **Prominent shoulders.** **Narrow pronotum.** **Large.** Compare *Phyllobius*, *Polydrusus*, and *Sitona*.



*Graptus triguttatus*. **Distinctive pattern.** Wing-cases narrowed towards the rear.



*Otiorhynchus* and *Peritelus sphaeroides*. **Long antennae**, scape longer than the head. Rostrums **pinched in** at the middle and swollen at the end exposing much of the antennal sockets, which from above look like a **pig-snout** or flaring nostrils. Front femurs **bulging** in the middle, spindly at the base. Wing-cases rounded to **oval**, with **rounded** sides and shoulders. **Compare** *Phyllobius* and *Polydrusus* have long antennae, but they have straighter, narrower wing-cases, squarer shoulders, and different scales (many are metallic green or copper, unlike *Otiorhynchus*). *Liophloeus tessulatus* has straighter sides and squarer shoulders. *Baryontus* and *Tropiphorus* have shorter antennae and they do not have flaring nostrils.









*Phyllobius*, *Pachyrhinus*, and *Polydrusus*. Wing-cases with rather **straight** sides and **prominent shoulders**. Most of the species are associated with trees. The metallic green ones are particularly noticeable in spring.

*Phyllobius*. Antenna sockets round like a **pig-snout**. **Thick** antennae. **Compare:** *Polydrusus* and *Pachyrhinus* have thinner antennae and slender sockets. *Otiorhynchus* have more rounded sides and rostrum wider at the end.



*Phyllobius glaucus* and *Phyllobius pomaceus*. Antenna sockets **not** round like a pig-snout. **Large** tooth on the underside of the front femur. Rostrum wider at the tip. **Compare:** *Polydrusus* and *Pachyrhinus* have thinner antennae. Other *Phyllobius* are smaller and have pig-snout antenna sockets.



*Pachyrhinus*. **Slender** antennae. Rounded, wide head, with a **soft** look. Femurs densely scaled. Wing-cases desnsely covered with short leaning hair-scales scales, appearing shortly **bristly**. On cypress and other garden conifers. [Compare](#) *Polydrusus* are not so densely bristly and most have less densely scaled femurs and a less rounded head.





*Polydrusus*. **Slender** antennae. Antenna sockets narrow. Compare *Phyllobius* have pig-snout antenna sockets and thicker antennae. *Pachyrhinus* have a softer-looking, more rounded head.



Mark Gurney: text, layout, and images. Udo Schmidt images where credited. This work is licensed under the Creative Commons Attribution-NonCommercial-ShareAlike 4.0 International License. To view a copy of this license, visit <http://creativecommons.org/licenses/by-nc-sa/4.0/>.