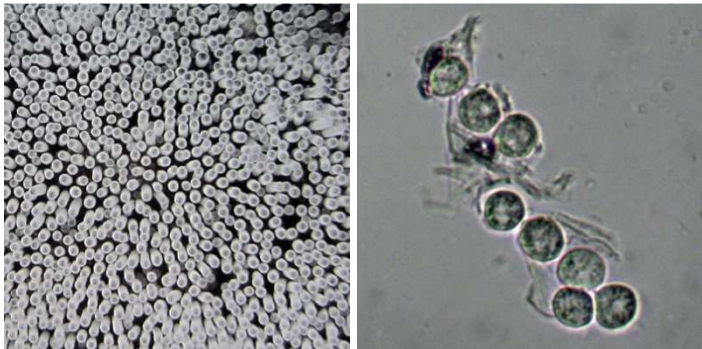


Coral Slime *Ceratiomyxa fruticulosa* (O.F. Muller) T. Macbride



OVERALL: North Laurel Park, 5/25/2009, R. Solem.
OVERALL: Pigtail, 8/17/2009, J. Solem.
YOUNG: Woodstock, PVSP, 6/16/2015, J. Solem.
SPORES (8.6-9.7 X 7.6-8.8 µm): Woodstpck, PVSP, 6/16/2015, R. Solem.

Coral Slime

[Ceratiomyxa fruticulosa](#)
Ceratiomyxaceae

J	F	M	A	M	J	J	A	S	O	N	D
		- - - -	- - - -	+ - +	+++	+++	+++	- - -	- + +	- +	

ID: Body white, fuzzy; and cylindrical.

Habitat: Clusters. On well-decayed logs.

Fruiting Body: Up to 0.4" long [1 cm]
Columnar. White, fuzzy appearance.

Stalk: Short (if visible).

Spores: *White*. Ellipsoid, rough.

Frequency: Abundant—particularly after prolonged rainy periods.

Locations: BENBR, BIGBR, BRNBR, CEDLP, DANPV, GONRA, HENPV, HOLLO, LONGC, MCHPV, MPENA, MTPLT, NOLAP, PIGTL, ROBNC, RKBPR, ROGOR, SLMLP, SYRIV, WSKPV, WSTRP, WINTR.

Notes: Mycobank 232106. Woodstpck, PVSP, specimen identified by examination of spores by R. Solem.

Synonym: *Ceratiomyxa fruticulosa* var. *fruticulosa*.

References: Bar 35. E&S 377. Lin 845, 740. Myx 93.