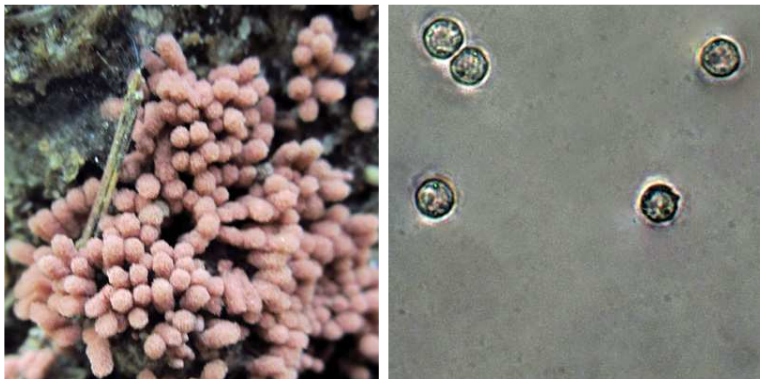


None *Arcyria incarnata* (Persoon ex J. Fl.Gmelin) Persoon



OVERALL: MPENA, 7/8/2009, *R. Solem*.

OVERALL (top down): Daniels, PVSP, 8/8/2014, *J. Solem*.

SPORES (6.6 – 7.2 X 6.5-6.8 µm): Woodstock, PVSP, 6/25/2015, *R. Solem*.

OVERALL : Woodstock, PVSP, 6/25/2015, *J. Solem*.

None

[Arcyria incarnata](#)  
Arcyriaceae

|   |   |   |         |         |         |         |         |         |         |   |   |
|---|---|---|---------|---------|---------|---------|---------|---------|---------|---|---|
| J | F | M | A       | M       | J       | J       | A       | S       | O       | N | D |
|   |   |   | - - - - | - - - - | - + + + | + - - - | + - - - | - - - - | - + - - |   |   |

**ID:** Egg-shaped mass on short stalk; contents expand to form pink/salmon mesh.

**Habitat:** Clusters. On well-decayed logs or bark (less frequent).

**Fruiting Body:** Up to 1/8" tall [3 mm]

Egg-shaped/short cylindrical. Outer wall disappears and contents expand to form bright pink/salmon-pink mesh.

**Stalk:** Short [1 mm], color of peridium.

**Spores:** Red/reddish-brown. Nearly round, smooth.

**Frequency:** Occasional.

**Locations:** DANPV, FRANF, GONRA, MCHPV, MPENA, WSKPV.

**Notes:** Mycobank 162394. Daniels and Woodstock specimens identified by examination of spores by *R. Solem*. Initial identification by *L. Biechle (pers.comm.)*

**References:** [http://zipcodezoo.com/Protozoa/A/Arcyria\\_incarnata/](http://zipcodezoo.com/Protozoa/A/Arcyria_incarnata/)  
Myx 88. <http://www.discoverlife.org/mp/20q?search=Arcyria+incarnata>