



**The Smallest Snakefly (Raphidioptera: Mesoraphidiidae):
A New Species in Cretaceous Amber from Myanmar,
with a Catalog of Fossil Snakeflies**

Author: ENGEL, MICHAEL S.

Source: American Museum Novitates, 2002(3363) : 1-22

Published By: American Museum of Natural History

URL: [https://doi.org/10.1206/0003-0082\(2002\)363<0001:TSSRMA>2.0.CO;2](https://doi.org/10.1206/0003-0082(2002)363<0001:TSSRMA>2.0.CO;2)

BioOne Complete (complete.BioOne.org) is a full-text database of 200 subscribed and open-access titles in the biological, ecological, and environmental sciences published by nonprofit societies, associations, museums, institutions, and presses.

Your use of this PDF, the BioOne Complete website, and all posted and associated content indicates your acceptance of BioOne's Terms of Use, available at www.bioone.org/terms-of-use.

Usage of BioOne Complete content is strictly limited to personal, educational, and non - commercial use. Commercial inquiries or rights and permissions requests should be directed to the individual publisher as copyright holder.

BioOne sees sustainable scholarly publishing as an inherently collaborative enterprise connecting authors, nonprofit publishers, academic institutions, research libraries, and research funders in the common goal of maximizing access to critical research.

AMERICAN MUSEUM *Novitates*

PUBLISHED BY THE AMERICAN MUSEUM OF NATURAL HISTORY
CENTRAL PARK WEST AT 79TH STREET, NEW YORK, NY 10024
Number 3363, 22 pp., 5 figures, 1 table March 26, 2002

The Smallest Snakefly (Raphidioptera: Mesoraphidiidae): A New Species in Cretaceous Amber from Myanmar, with a Catalog of Fossil Snakeflies

MICHAEL S. ENGEL¹

CONTENTS

Abstract	2
Introduction	2
Systematic Paleontology	3
<i>Nanoraphidia</i> , new genus	3
Mesoraphidiid larva	5
Discussion	6
Acknowledgments	10
References	10
Appendix 1: Taxonomic Catalog of Fossil Snakeflies (Raphidioptera)	13
Family Alloraphidiidae	14
Family Baissopteridae	15
Family Inocelliidae	16
Family Mesoraphidiidae	17
Family Priscaenigmatidae	20
Family Raphidiidae	21
Incertae sedis	22

¹ Research Associate, Division of Invertebrate Zoology, American Museum of Natural History; Assistant Professor, Department of Ecology and Evolutionary Biology, and Curator-in-Charge, Division of Entomology, Natural History Museum and Biodiversity Research Center, Snow Hall, 1460 Jayhawk Boulevard, University of Kansas, Lawrence, Kansas 66045-7523.

ABSTRACT

The world's smallest snakefly (Raphidioptera) is described and figured from a fossil preserved in Cretaceous amber from Myanmar (formerly Burma). *Nanoraphidia electroburnica*, new genus and species, is distinguished from other mesoraphidiids by characters of the wing venation and head morphology. Brief comments are made on the diminutive size of the specimen (forewing length just over 4 mm) and the geological history of the order is reviewed. Additionally, a larval snakefly is described from the same deposits, but is not considered to be congeneric with *Nanoraphidia*. A taxonomic catalog of all described, fossil snakeflies is appended. The following taxonomic changes are proposed: **Priscaenigmatidae**, new family, including *Priscaenigma* Whalley and *Hondelagia* Bode; Huaxiaraphidiidae, Sinoraphidiidae, and Jilioraphidiidae, new synonyms of Mesoraphidiidae; *Cratoraphidia* and *Rudiraphidia*, new synonyms of *Baissoptera*; *Caloraphidia*, *Mioraphidia*, *Phiradia*, *Xynoraphidia*, and *Yanoraphidia*, new synonyms of *Mesoraphidia*; *Miofibla*, new synonym of *Fibla* (*Reisserella*); ***Cratoraphidiopsis***, new name for *Cratoraphidia* Willmann (*non Cratoraphidia* Ponomarenko); *Baissoptera pulchra* (Martins-Neto and Nel), new combination; *B. liaoningensis* Ren, resurrected combination; *Cratoraphidiopsis bontsaganensis* (Ponomarenko), new combination; *Fibla* (*Reisserella*) *cerdanica* (Nel), new combination; *Pararaphidia vitimica* (Martynova), new combination; *Mesoraphidia furcivenata* Ren and *M. pterostigmalis* Martynova, resurrected combinations; and *M. gaoi* (Ren), *M. glossophylla* (Ren), *M. longistigmata* (Ren), *M. myri-oneura* (Ren), *M. obliquivenata* (Ren), *M. polyphlebia* (Ren), and *M. shangyuanensis* (Ren), all new combinations in *Mesoraphidia*.

INTRODUCTION

Among the orders of holometabolous insects, a lineage renowned as the most diverse radiation of animal life, the snakeflies (Raphidioptera) comprise the least speciose group (ca. 206 modern species) and are among the most distinctive and remarkable of lineages. The order is readily recognizable for the elongate prothorax and long ovipositor in females, among other traits, although true autapomorphies for the group are not immediately evident. Today the order consists of approximately 206 species entirely restricted to the Northern Hemisphere and principally in temperate habitats at latitudes and altitudes that experience a cold winter (Aspöck, 1998; Aspöck, Aspöck, and Rausch, 1991, 1998, 1999a, 1999b; Aspöck, Aspöck, and Yang, 1998; Yang, 1998). A particular concentration of species can be found in Central Asia and around the Tien Shan Mountain range passing from Tadjikistan, through Kyrgyzstan, and extending into western Uzbekistan, southeastern Kazakhstan, and the northwestern borders of China (Aspöck et al., 1999a). Species of the order are arboreal. Larvae are generalist predators and relatively long-lived, principally living under the bark of trees and shrubs (a few raphidiids live in leaf litter at the base of

shrubs). Adults are short-lived and, like the larvae, are predaceous, although capable of capturing only weak prey. Species are generally inept flyers and thereby poor dispersers, making the group susceptible to vicariant events and subsequent adaptation and speciation.

Together with Neuroptera and Megaloptera the Raphidioptera comprise the superorder Neuropterida and the living adelphotaxon of the beetles (Coleoptera) (Mickoleit, 1973; Kristensen, 1991, 1999; Whiting et al., 1997; Hörschmeyer, 1998, Carpenter and Wheeler, 1999; Wheeler et al., 2001). While the overall position of the superorder within Holometabola is of little debate, some controversy remains concerning the relative positions among the three neuropterid orders. Most of the recent studies from both morphological and molecular evidence have converged to support a Raphidioptera + Megaloptera sister-group relationship (e.g., Whiting et al., 1997; Carpenter and Wheeler, 1999). This is somewhat supported by paleontological evidence since for the earliest of fossil snakeflies the hind wing venation is remarkably megalopteran-like while the forewings are typical for primitive Raphidioptera (see Discussion below and under Priscaenigmatidae in appendix 1), tantalizingly suggesting that the Raphidioptera are indeed more close-

ly allied to the Megaloptera and diverged from them in the early Mesozoic.

Fossils of snakeflies have been recognized since the middle of the 19th century. The first fossil was described as *Raphidia (Inocellia) erigena* Menge (Menge, 1856; Pictet-Baraban and Hagen, 1856) from an individual preserved as an amber inclusion from the Tertiary of northern Europe. Throughout the remainder of the 19th century and well into the early 20th century numerous other Tertiary snakeflies were described from compression fossils in North America, almost exclusively from Florissant, Colorado (appendix 1). In 1925 the great founder of Russian paleoentomology Martynov (1925a, 1925b) discovered the first Mesozoic representatives of the order in Upper Jurassic deposits of Central Asia. Subsequently, Carpenter (1967), Bode (1953), and Martynova (1947, 1961) proposed additional Jurassic and Cretaceous species adding significantly to our knowledge of the group. Modern authors have proposed numerous more Mesozoic species, principally from the Upper Jurassic and Cretaceous of Asia (e.g., Ponomarenko, 1993; Ren, 1997), but also from the Jurassic of Europe (Whalley, 1985; Willmann, 1994) and the Lower Cretaceous of Brazil (e.g., Oswald, 1990); all are preserved as compressions. Lower Cretaceous species are also known from Spain (Martínez-Delclòs, 1991; Peñalver et al., 1999) and Korea (Engel, unpubl. data), but remain undescribed. Although numerous Paleozoic species have been described as plesiomorphic lineages of Raphidioptera, all have subsequently been removed from the order (see Discussion, below).

Until recently, amber snakeflies were restricted to those preserved in middle Eocene (Lutetian) Baltic amber (Carpenter, 1956; Engel, 1995; Weitschat and Wichard, 1998). Grimaldi (2000) described the first Cretaceous-amber snakefly in Turonian amber from New Jersey—the first representative of the extinct family Mesoraphidiidae in amber—as well as a mesoraphidiid larva from the same deposits. Herein a second Cretaceous-amber snakefly, also of the Mesoraphidiidae, is described and figured. The new species was discovered in Cretaceous (Cenomanian?) amber from Myanmar and is the

first Mesozoic amber snakefly from the Old World. The age and fauna of Burmese amber has most recently been considered by Zherikhin and Ross (2000) and Grimaldi et al. (2002), although several earlier authors have also presented accounts of its age (e.g., Cockerell, 1917). A raphidiopteran larva has also been recovered from these same deposits (Rasnitsyn and Ross, 2000; Engel, personal obs., see below), but is not conspecific with the imago described below and, although perhaps a mesoraphidiid, cannot be confidently assigned to family. Perhaps the most remarkable attribute of the adult specimen considered herein is its diminutive size. The forewing length of the individual is just under 4.5 mm making it the smallest snakefly, living or fossil. This new and particularly noteworthy species is described to make its name available for papers considering the paleontological significance of Burmese amber (Grimaldi et al., 2002) as well as a forthcoming monograph on the neuropterid fauna of Burmese amber (Engel, in prep.). In addition, an overview of the geological history of the order is presented with a taxonomic catalog of fossil snakeflies appended (appendix 1). Morphological terminology follows that of Aspöck et al. (1991).

SYSTEMATIC PALEONTOLOGY

Nanoraphidia, new genus

TYPE SPECIES: *Nanoraphidia electroburmica*, new species.

DIAGNOSIS: Minute size (forewing length under 5 mm, fig. 1). Head ovoid, gently tapering posterad posterior tangent of compound eyes (fig. 2; similar to heads of Raphidiidae); three large ocelli present, positioned near posterior tangent of compound eyes, posterior border of head without, shallow, collarlike lip; antenna inserted posterior to clypeal-frons suture, slightly basad anterior tangent of compound eyes; antenna longer than head; clypeus truncated, apical margin only slightly extending beyond anterior tangent of compound eyes; compound eyes large and exophthalmic; coronal suture absent. Pronotum subequal in length to head length, with anterior half narrowed dorsoventrally relative to posterior half (i.e., with slight downward curve in lateral view, see fig. 2).



Fig. 1. Photomicrograph of holotype of *Nanoraphidia electroburnica*, new genus and species (AMNH Bu-092).

Forewing with costal area relatively broad, at widest point costal field 1.75 times broader than pterostigma (as broad or narrower than pterostigma in other Mesoraphidiidae); pterostigma elongate, without crossveins; Sc terminating into C near wing midpoint; single medial cell posterior to MP (2–3 medial cells posterior to MP in *Mesoraphidia*); first cuacup crossvein strongly basad M-CuA separation (at or separated by a few vein widths in other mesoraphidiids).

ETYMOLOGY: The new genus-group name is a combination of *nanos* (Greek, meaning “dwarf”) and *Raphidia*. The name is feminine.

COMMENTS: The expanded costal area is reminiscent of the same feature in *Cretinocellia* and *Lugala* (Ponomarenko, 1988; Willmann, 1994); however, both of these genera are baissopterids, exhibiting the rich crossveins and dense number of cells between Rs and M. The slightly expanded costal area is likewise similar to the living families Raphidiidae and Inocelliidae.

Nanoraphidia electroburnica,
new species

Figures 1–3

DIAGNOSIS: As for the genus (see above).

DESCRIPTION: As for the genus with the following additions: Forewing length 4.26 mm. Integument dark brown, without maculations, faintly imbricate (where evident); wing veins brown, membrane hyaline, pterostigma faintly infumate. Mandible with large, curved, apical tooth separated from series of minute, median serrations by deep notch; compound eye length nearly as long as head posterad posterior tangent of compound eyes; compound eyes separated by distance slightly greater than compound eye length; inner margins of compound eyes relatively straight and parallel; 20 flagellomeres, each about as long as wide, with sparse, minute setae. Five tarsal segments, third bilobed; claws simple; arolium large. Forewing with pterostigma elongate (more so than in most other mesoraphidiids, fig. 3), but begin-

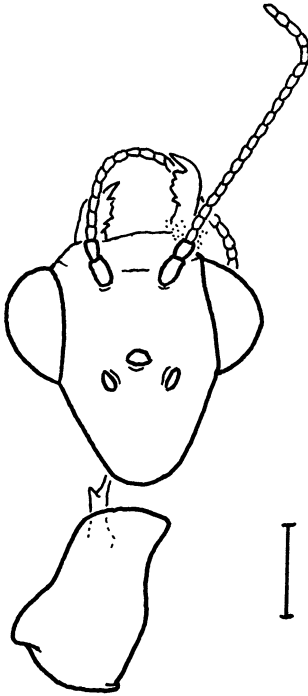


Fig. 2. Dorsal of head and dorsolateral oblique view for pronotum of holotype of *Nanoraphidia electroburmica*, new genus and species (AMNH Bu-092). Scale bar = 0.25 mm.

ning beyond termination of Sc, without transverse pterostigmal crossveins except at very base of pterostigma and distad terminus of Sc by 1.75 times pterostigmal width; pterostigma longer than either radial cell; veins meeting wing margins not apically bifurcate; five costal crossveins (c-sc); single, proximal sc-r crossvein; two large radial cells present, with two posterior cells immediately behind and progressively decreasing in size; first radial cell distinctly longer than second radial cell, with posterior radial branch arising slightly basad its midpoint; single medial cell present; M-CuA separation positioned near midpoint between two cua-cup crossveins; A2 strongly arcuate proximally; minute jugal lobe not evident (remaining venational details depicted in fig. 3). Preserved portion of hind wing as depicted in Figure 3. Thorax and abdomen largely crushed, but overall length can be determined from the remains

and abdominal apex does not surpass forewing apex.

HOLOTYPE: AMNH Bu-092; Myanmar (Burma), Upper Cretaceous [Cenomanian?], Kachin, Tanai Village, on Ledo Road 105 km NW Myitkyna, coll. Leeward Capitol Corp., 1999. Labeled "HOLOTYPE, *Nanoraphidia electroburmica* Engel". Deposited in the amber collection, Division of Invertebrate Zoology, AMNH. The individual of *Nanoraphidia* is preserved in a large piece of clear, orange-colored amber measuring approximately 1.8 cm wide, 2.0 cm long, and gently tapering on one end from a height of 1.3 cm down to 0.8 cm. The amber contains some internal flow-lines, but none of these obscure the snakefly. The amber was epoxy embedded following the procedure of Nascimbene and Silverstein (2000) prior to trimming, polishing, and eventual study with an Olympus stereomicroscope. In addition to the snakefly the amber also includes one spider, two mites, one thrips, six flies (three psychodids, one mycetophilid, one ceratopogonid, and one chironomid), one beetle, and one wasp. The body of the specimen is badly damaged, with much of the thorax and abdomen preserved as integumental debris. The pronotum, head, anterior legs, and wings are preserved nicely and somewhat cleared.

ETYMOLOGY: The specific epithet is a combination of *electrum* (Latin, meaning "amber") and Burma, former name of the country from which the amber originated.

Mesoraphidiid Larva

Figure 4

COMMENTS: This specimen is the oldest snakefly larva presently known. It is very likely neither conspecific nor congeneric with *N. electroburmica*, since the larva is several times larger than the adult described above. Aside from this specimen, there is only one other Cretaceous amber snakefly larva, preserved in Turonian amber from New Jersey (Grimaldi, 2000). Both specimens are perhaps mesoraphidiids. Additional immature snakeflies in amber are reported from the middle Eocene resins of the Baltic region (Weidner, 1958; Weitschat and Wichard, 1998).

Among immature Raphidioptera this spec-

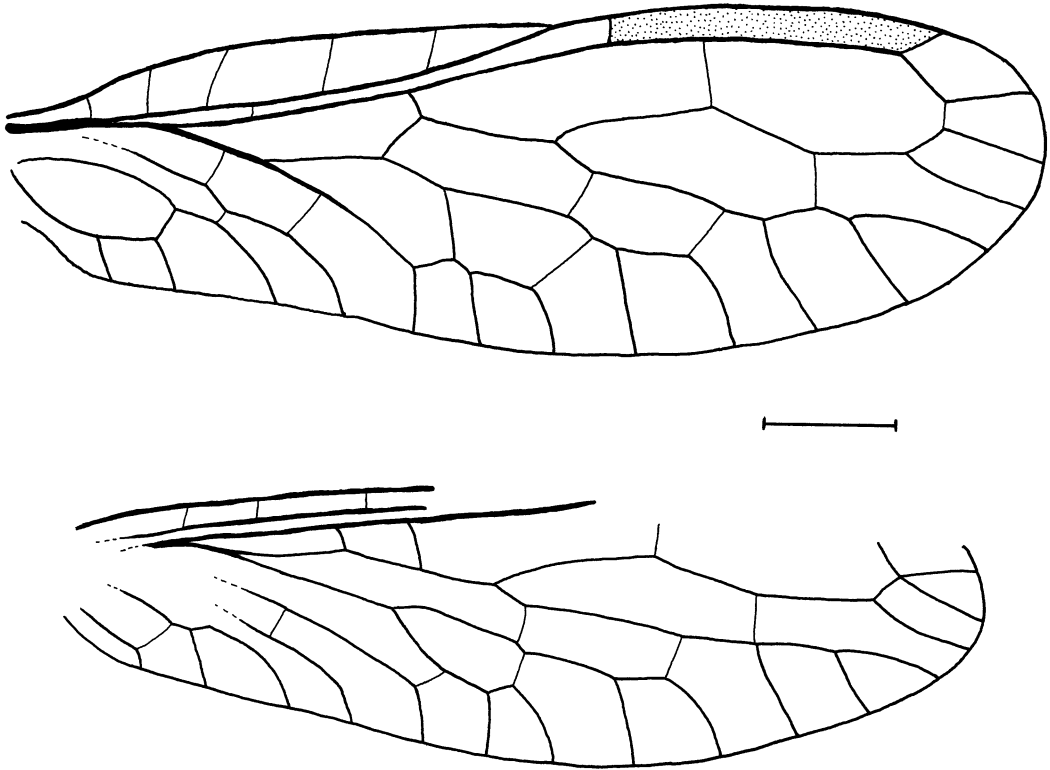


Fig. 3. Wing venation of *Nanoraphidia electroburmica*, new genus and species (AMNH Bu-092); forewing above, preserved portion of hind wing below. Scale bar = 0.5 mm.

imen is quite distinctive. The elongate and narrow head (fig. 4) is immediately diagnostic and quite different from other snakefly larva, fossil or extant (e.g., compare with those figured in Aspöck et al., 1991; Weitschat and Wichard, 1998; Grimaldi, 2000). The individual is nearly 14 mm in total length (easily much larger than *Nanoraphidia*) and the head alone is nearly 2 mm in length. Similarly, the three antennal segments are elongate and together slightly longer than the head. The prothorax is similarly elongate and the mesothorax slightly so; the metathorax and abdominal segments are more typical of modern snakeflies. Like the mesoraphidiid larva described by Grimaldi (2000), a distinct collar is not apparent as is for most Raphidiidae and Inocelliidae.

MATERIAL: Larva; Burmese amber, In. 20150 (BMNH). Preserved in a large slab of burmite with numerous other arthropod inclusions.

DISCUSSION

To date all “cladistic” studies for Recent and fossil snakeflies have been greatly lacking and the higher phylogeny of the order is confused. The study by Ren and Hong (1994) based on an a priori polarization of six characters for seven terminals is not only the least rigorous but the most fraught with confusion surrounding characters (definitions and codings), identification of snakeflies, and basic systematic principles and theories. Characters from this study are quite dubious, some are clearly continuous without distinctions among states (e.g., prothorax short versus elongate, Rs originating just before or just after wing midpoint) or are based on homology statements that defy logic (e.g., “more crossveins” versus “less crossveins”). No characters were coded as polymorphic for particular lineages when indeed considerable variation exists within the ter-

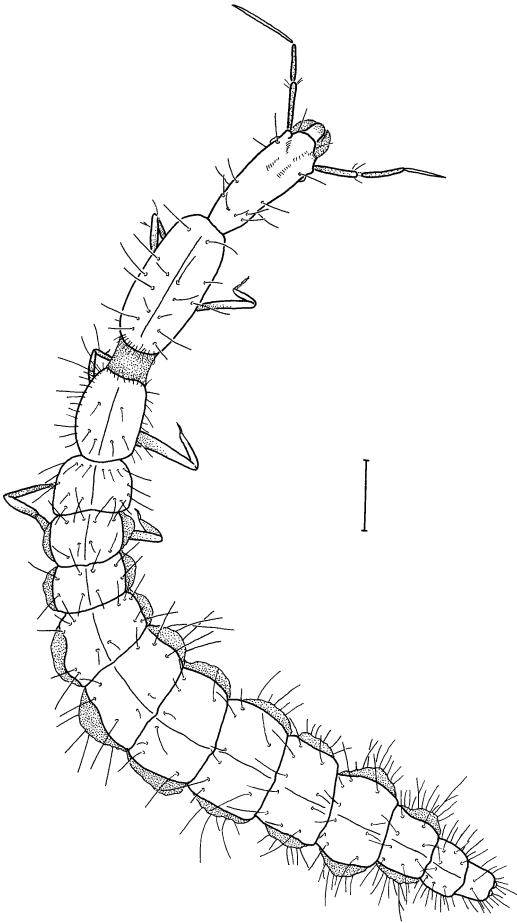


Fig. 4. Habitus of larval snakefly preserved in Burmese amber from the BMNH collection (In. 20150). Scale bar = 1.0 mm.

minals under consideration (e.g., Baissopteridae includes genera with and without pterostigmal veins and there is no clear picture as to which is the ground-plan state for the family, yet this terminal is coded as strictly present). Lastly, these authors claim to have demonstrated that the terminals in their analysis were monophyletic (in this instance, families) and yet, based on their own “data” and “analyses”, two groups lack apomorphies altogether.

The study of Willmann (1994) was certainly more logically founded and more serious. Several familial exemplars were employed, thereby allowing for a more meaningful consideration of the monophyly of particular groups and the obviously errone-

ously assigned lineages removed. However, the definitions of several characters were similarly continuous and based on unnecessarily complicated transformation series, while some of the characters are simply tenuous. The homologies of particular veins may indeed be of some question, but the comparisons drawn by Willmann (1994) are no more sound than any presently employed. Despite these criticisms, Willmann (1994) has certainly prepared a stronger foundation for the incorporation of paleontological data in Raphidioptera phylogenetics than his predecessors. Although controversial, his hypotheses for relationships among snakeflies are more legitimately based and will require rigorous testing by future cladistic analyses in concert with a critical evaluation of homologies and a broader spectrum of character data. It is to be greatly regretted that the wealth of systematic data present in snakefly genitalia is not available for the fossil lineages.

As one might suspect, the classification of Mesozoic snakeflies is presently an inordinate mess and no clear picture of relationship presently exists. The “distinctive” features of several families are by no means unique to their supposed lineages and, in fact, numerous species are known to intermingle such attributes. The Jilinoraphidiidae and Huaxiraphidiidae are clearly synonyms of Mesoraphidiidae (these families are newly synonymized below; appendix 1). Similarly, although the Sinoraphidiidae is exceptionally poorly documented and described (Hong, 1982, 1992a, 1992b) it is certainly a synonym of Mesoraphidiidae (appendix 1). Despite the removal of these three Cretaceous “families”, considerable confusion persists. The characters separating the remaining families (i.e., Baissopteridae, Mesoraphidiidae, and Alloraphidiidae) are poor. For instance, some of the “distinctive” traits defining the Alloraphidiidae from other families include the strongly distad position of MA relative to the origination of MP, the separation of CuA from M exceedingly close to the stem of R (nearly appearing as a trifurcation), reduced pterostigma, and the greatly elongate wings (Carpenter, 1967, 1992). The elongate wings are truly notable, but they are merely autapomorphic. The former two features are,

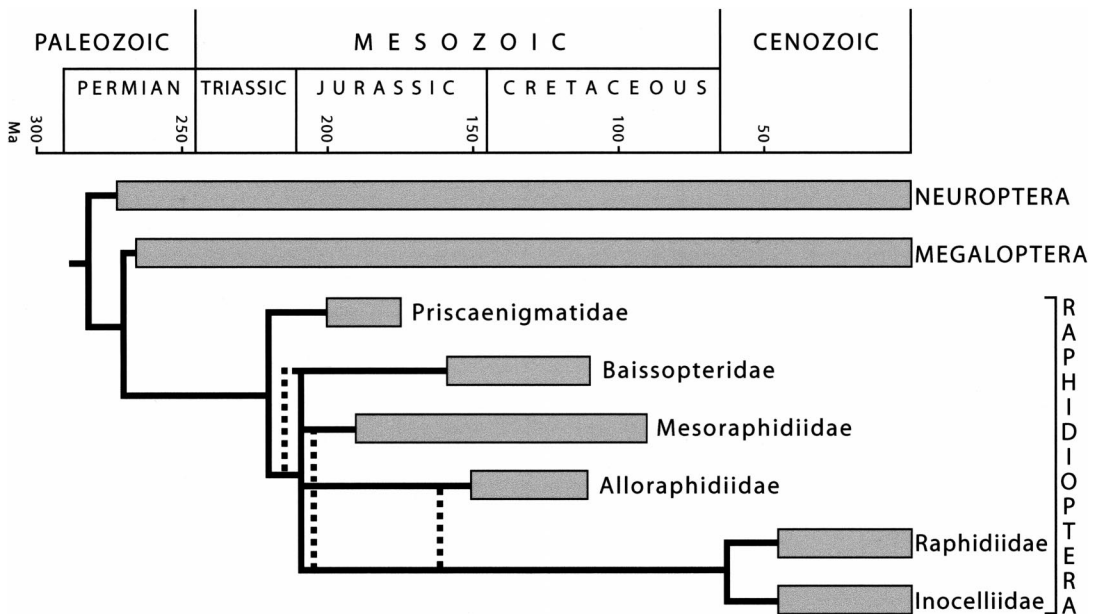


Fig. 5. Phylogeny of Raphidioptera. Broad, gray lines indicate known geological distributions; black lines are hypothesized ranges; dashed lines indicate alternative positions for particular groups and highlight the lack of a clear hierarchy of relationship. Characters are discussed in the text.

however, found in the living family Raphidiidae (e.g., some *Phaeostigma* species) as well as some mesoraphidiids, and for some of these traits there is continuous variation between the states resulting in a confusion concerning the homology of alternate states (i.e., it is difficult to consistently and confidently assign particular taxa to either character-state). Some genera that do appear on the surface to be valid (e.g., *Archeraphidia*, *Pararaphidia*) appear to further blend the boundaries of the families Alloraphidiidae and Mesoraphidiidae. The Baissopteridae appears to be more plesiomorphic than the Alloraphidiidae, Mesoraphidiidae, and extant families, assuming that the numerous crossveins and cells are plesiomorphic. The Liassic genera *Priscaenigma* and *Hondelagia*, formerly classified in the Baissopteridae, represent a fundamentally different plan of wing venation and one that is plesiomorphic to all other snakeflies. In the forewing of Baissopteridae, Mesoraphidiidae, Alloraphidiidae, Raphidiidae, and Inocelliidae, the subcosta terminates into the costa near the midpoint of the wing. In both *Priscaenigma* and *Hondelagia* the subcosta extends to the wing

apex and appears to fuse directly with the radial system as in the Megaloptera (hind wings exhibit more typical raphidiopteran venation, e.g., see figures in Willmann, 1994). For this reason, both genera are here placed in a separate family, Priscaenigmatidae (appendix 1), and sister to all other Raphidioptera (fig. 5). The families of Recent and fossil snakeflies are summarized in table 1 while a hypothesis of their relationships and geological distribution is presented in Figure 5.

While the Raphidioptera are undoubtedly ancient, evidence of their occurrence in the Paleozoic has completely eroded (Carpenter, 1967, 1992; Sharov, 1968, 1971; Storozhenko, 1998; Storozhenko and Novokshonov, 1995; Shcherbakov, 1995), leaving the oldest definitive snakeflies as those from the Lower Jurassic. All Paleozoic families of snakeflies (i.e., Fatjanopteridae, Letopalopteridae, Permoraphidiidae, and Sojanoraphidiidae) have recently been removed from the order (although their assignment to Raphidioptera has been suspect for considerable time, e.g., Carpenter, 1967). The Permoraphidiidae, Sojanoraphidiidae, and Letopalopteridae were

TABLE 1
Families of Raphidioptera and their Geological Distribution

Order RAPHDIOPTERA Navás ^a	
Suborder Priscaenigmatomorpha, new	
Family Priscaenigmatidae Engel, new	Lower Jurassic
Suborder Raphidiomorpha, new	
Family Baissopteridae Martynova	Uppermost Jurassic–Lower/Middle Cretaceous
Family Mesoraphidiidae Martynov	Lower Jurassic–Upper Cretaceous
Family Alloraphidiidae Carpenter	Lower-Middle Cretaceous
Family Raphidiidae Latreille	Eocene–Holocene
Family Inocelliidae Navás	Eocene–Holocene

^aNavás (1916), following Shipley's (1904) mandate for a common *-ptera* suffix for insect ordinal names, was the first to use the ordinal name in this form and I have therefore attributed authorship to him even though earlier authors had also considered the snakeflies as a distinct order (under names such as Raphidiodea or other variants).

transferred to the orders Orthoptera (Carpenter, 1967, 1992; Sharov, 1968, 1971), Grylloblattaria (Storozhenko and Novokshonov, 1995), and Protorthoptera (Rasnitsyn *in* Novokshonov, 1998a, 1998b), respectively. The “ovipositor” of letopalopterids, in particular, was subsequently discovered to be preserved portions of legs, rather than a terminalic structure (Novokshonov, 1998a, 1998b). Lastly, the family Fatjanopteridae was synonymized with the family Ampelipteridae in the Protorthoptera (Shcherbakov, 1995). While I agree that these families are not snakeflies, it must be noted that assignments to orders such as Orthoptera, Grylloblattaria, and Protorthoptera are equally questionable. Particularly dubious are the numerous Paleozoic and Mesozoic winged fossils assigned to Grylloblattaria (today an enigmatic and apterous order); none of these fossils preserve a single diagnostic synapomorphy of Grylloblattaria or even appear to share gross similarities (apomorphic or not) with modern grylloblattids, and thus the conjectures of diversity changes for this lineage (e.g., Storozhenko, 1998; Vršanský et al., 2001) should be considered with serious skepticism. For Paleozoic and Mesozoic fossils the name Grylloblattaria has essentially become a meaningless, receptacle taxon for a polyphyletic assemblage of genera.

Although plesiomorphic with respect to the extant Raphidiidae and Inocelliidae, the earliest snakeflies from the Upper Jurassic already possessed the remarkable synapomorphies for the order. The Raphidioptera, therefore, likely extends well into the Triassic and

perhaps even the latest Permian. Although no direct evidence currently supports the conjecture that Raphidioptera is of Paleozoic origin, indirect evidence from the apparent geological ages of related clades (i.e., Neuroptera and Megaloptera) implies that the snakeflies are at least from the Late Triassic and perhaps as old as the Upper Permian (although this latter date is far less likely). Continued paleontological work will undoubtedly refine these estimates as more material becomes available from Triassic deposits. Based on currently available evidence, the snakeflies likely originated and diversified in the earliest Mesozoic after the cataclysmic Permian extinction event.

While modern snakeflies are not found in humid, tropical environments, it is clear that such habitat restrictions have not always been a characteristic of the order. The Cenomanian forests responsible for producing the Burmese amber in which *Nanoraphidia* occurred were perhaps the most tropical of all the Cretaceous amber localities (Grimaldi et al., 2002). This is also true, although to a much lesser degree, of the amber-producing forests of the Middle Eocene in northern Europe where snakeflies are also known to have occurred (Carpenter, 1956; Engel, 1995; Weitschat und Wichard, 1998). Thus, tropical or subtropical snakeflies persisted at least into the early Tertiary but were perhaps relict and eventually extinguished by the climatic changes marking the Eocene-Oligocene transition. It is also abundantly clear that the order was globally distributed in the past (e.g., species from the Lower Cretaceous of South

America) and has undergone significant extinction. The broader distribution and climatic range of extinct snakefly lineages are likely linked. Overall the Cretaceous was much warmer than the Cenozoic (particularly so following precipitous drops in the Paleogene) and climatic changes perhaps drove many Raphidioptera lineages near extinction. As hypothesized by Aspöck (1998, 2000) the decline of the order was perhaps accentuated by the extraterrestrial impact and concomitant climatic disruption at the close of the Cretaceous. Those snakefly lineages not already adapted for colder climates in the early Tertiary would have been quickly extinguished. Extinction left the colder-adapted lineage of the Raphidiidae and Inocelliidae free to diversify in the temperate habitats of the Northern Hemisphere during the latest Paleogene and Neogene, thereby giving us the present distribution of the order.

ACKNOWLEDGMENTS

I am grateful to David A. Grimaldi, AMNH, for bringing this specimen to my attention, allowing for its study, and for sketching the snakefly larva for me; to Andrew J. Ross, BMNH, for hosting me during my visits to examine fossil insects in London; to Molly G. Rightmyer, Antonio Arillo, and an anonymous reviewer for carefully reading the manuscript prior to publication; and to Tam C. Nguyen for preparing the photograph of the *Nanoraphidia* holotype. This is contribution Nr. 3267 of the Division of Entomology, Natural History Museum and Biodiversity Research Center, University of Kansas. Support was provided by NSF Grant DBI-9987372 to D. A. Grimaldi.

REFERENCES

- Albarda, H. 1891. Révision des Rhaphidides. Tijdschrift voor Entomologie 34: 65–184.
- Aspöck, H. 1998. Distribution and biogeography of the order Raphidioptera: Updated facts and a new hypothesis. Acta Zoologica Fennica 209: 33–44.
- Aspöck, H. 2000. Der endkreidezeitliche Impact und das Überleben der Raphidiopteren. Entomologica Basiliensia 22: 223–233.
- Aspöck, H., and U. Aspöck. 1968a. Vorläufige Mitteilung zur generischen Klassifizierung der Raphidioptera (Insecta, Neuroptera). Entomologisches Nachrichtenblatt 15: 53–64.
- Aspöck, H., and U. Aspöck. 1968b. Neue Subgenera des Genus *Raphidia* L. (Insecta, Raphidioptera) sowie drei weitere neue Arten dieser Gattung aus der Sowjet-Union (Vorläufige Beschreibung). Entomologisches Nachrichtenblatt 15: 89–92.
- Aspöck, H., and U. Aspöck. 1971. *Inocellia* (*Reiserella* n. subgen.) *pasiphae* n. sp. aus Kreta (Ins., Raphidioptera, Inocelliidae). Entomologische Zeitschrift 81: 270–272.
- Aspöck, H., U. Aspöck, and O. M. Martynova. 1968. Neue Arten der Gattung *Raphidia* L. (Insecta, Raphidioptera) aus der Sowjet-Union (Vorläufige Beschreibung). Entomologisches Nachrichtenblatt 15: 86–89.
- Aspöck, H., U. Aspöck, and H. Rausch. 1991. Die Raphidiopteren der Erde: Eine monographische Darstellung der Systematik, Taxonomie, Biologie, Ökologie und Chorologie der rezenten Raphidiopteren der Erde, mit einer zusammenfassenden Übersicht der fossilen Raphidiopteren (Insecta: Neuropteroidea). Krefeld: Goecke and Evers.
- Aspöck, H., U. Aspöck, and H. Rausch. 1998. *Mongoloraphidia gulnara* n. sp.—eine neue Kamelhalsfliege aus Kirgisistan (Neuropteroidea: Raphidioptera: Raphidiidae). Zeitschrift der Arbeitsgemeinschaft Österreichischer Entomologen 50: 65–71.
- Aspöck, H., U. Aspöck, and H. Rausch. 1999a. Biologische und chorologische Charakterisierung der Raphidiiden der östlichen Paläarkt und Verbreitungskarten der Kasachstan, Kirgisistan, Usbekistan, Turkmenistan und Tadschikistan nachgewiesenen Arten der Familie (Neuroptera: Raphidioptera: Raphidiidae). Stapfia 138: 59–84.
- Aspöck, H., U. Aspöck, and H. Rausch. 1999b. *Mongoloraphidia* (*Alatauraphidia*) *pskemiana* n. sp. aus dem westlichen Tienshan und Beschreibung der Larven von *M. (A.) eklipes* U.A. & H.A. und *M. tienshanica* H.A. & U.A. & Rausch (Insecta, Neuroptera, Raphidioptera, Raphidiidae). Entomologische Nachrichten und Berichte 43: 79–86.
- Aspöck, H., U. Aspöck, and C.-K. Yang. 1998. The Raphidiidae of eastern Asia (Insecta, Neuroptera, Raphidioptera). Deutsche Entomologische Zeitschrift 45: 115–128.
- Bode, A. 1953. Die Insektenfauna des ostniedersächsischen Oberen Lias. Palaeontographica, Abteilung A 103: 1–375.
- Carpenter, F. M. 1936. Revision of the Nearctic Raphidioptera (Recent and fossil). Proceedings of the American Academy of Arts and Sciences 71: 89–157.
- Carpenter, F. M. 1956. The Baltic amber snakeflies (Neuroptera). Psyche 63: 77–81.

- Carpenter, F. M. 1967. Cretaceous insects from Labrador. 2. A new family of snake-flies (Neuroptera: Alloraphidiidae). *Psyche* 74: 270–275. [Publ. date: 12 June 1968]
- Carpenter, F. M. 1992. Superclass Hexapoda. In R.L. Kaesler (editor), *Treatise on Invertebrate Paleontology, Part R, Arthropoda 4* [vols. 3 & 4]. Boulder, CO: Geological Society of America.
- Carpenter, J. M., and W. C. Wheeler. 1999. Cladística numérica, análisis simultáneo y filogenia de hexápodos. *Boletín de la Sociedad Entomológica Aragonesa* 26: 333–346.
- Cockerell, T. D. A. 1907. Some fossil arthropods from Florissant, Colorado. *Bulletin of the American Museum of Natural History* 23: 605–616.
- Cockerell, T. D. A. 1909. Fossil insects from Florissant, Colorado. *Bulletin of the American Museum of Natural History* 26: 67–76.
- Cockerell, T. D. A. 1914. New and little-known insects from the Miocene of Florissant, Colorado. *Journal of Geology* 22: 714–724.
- Cockerell, T. D. A. 1917. Arthropods in Burmese amber. *American Journal of Science* 44: 360–368.
- Cockerell, T. D. A., and C. Custer. 1925. A new fossil *Inocellia* (Neuroptera) from Florissant. *Entomologist* 58: 295–297.
- Engel, M. S. 1995. A new fossil snake-fly species from Baltic amber (Raphidioptera: Inocelliidae). *Psyche* 102: 187–193. [Publ. date: March 1998]
- Grimaldi, D. 1990. Diptera. In D.A. Grimaldi (editor), *Insects from the Santana Formation, Lower Cretaceous, of Brazil*. *Bulletin of the American Museum of Natural History* 195: 164–183.
- Grimaldi, D. 2000. A diverse fauna of Neuropterodea in amber from the Cretaceous of New Jersey. In D. Grimaldi (editor), *Studies on Fossils in Amber, with Particular Reference to the Cretaceous of New Jersey*: 259–303. Leiden: Backhuys.
- Grimaldi, D. A., M. S. Engel, and P. C. Nascimento. 2002. Fossiliferous Cretaceous amber from Myanmar (Burma): Its rediscovery, biotic diversity, and paleontological significance. *American Museum Novitates* 3361: 1–71.
- Handlirsch, A. 1910. Canadian fossil insects. 5. Insects from the Tertiary lake deposits of the southern interior of British Columbia, collected by Mr. Lawrence M. Lambe, in 1906. *Contributions to Canadian Palaeontology* [Memoir of the Geological Survey of Canada] 2: 93–129.
- Hong, Y.-C. 1982. Mesozoic Fossil Insects of Jiuquan Basin in Gansu Province. Beijing: Geological Publishing House. [In Chinese]
- Hong, Y.-C. 1992a. A new family of Mesozoic snake-flies (Insecta, Raphidioptera) from the Laiyang Basin, China. *Paleontologicheskii Zhurnal* 1992: 101–105. [In Russian, with English summary]
- Hong, Y.-C. 1992b. A new Mesozoic family of snake flies (Insecta, Raphidioptera) from the Laiyang Basin of China. *Paleontological Journal* 26: 128–133. [English transl. of Hong, 1992a]
- Hong, Y.-C. 1992c. The study of early Cretaceous Coieoptera [sic], Raphidioptera [sic], Diptera (Insecta) of Kezuo, West Liaoning Province. *Acta Geologica Gansu* 1: 1–13. [In Chinese, with English summary]
- Hong, Y.-C. 1998. Establishment of fossil entomofaunas and their evolutionary succession in North China. *Entomologica Sinica* 5: 283–300.
- Hong, Y.-C., and J.-P. Chang. 1989. A new family “Jilioraphidiidae” of Raphidioptera (Insecta). *Geoscience* 1989: 290–296. [In Chinese, with English summary]
- Hörschmeyer, T. 1998. Morphologie und Evolution des Flügelgelenks der Coleoptera und Neuropterida. *Bonner Zoologische Monographien* 43: 1–126.
- International Commission on Zoological Nomenclature. 1999. *International Code of Zoological Nomenclature*. London: International Trust for Zoological Nomenclature. [4th ed.]
- Kristensen, N. P. 1991. Phylogeny of extant hexapods. In I.D. Naumann (editor), *The Insects of Australia: A Textbook for Students and Research Workers* [vol. 1; 2nd ed.] 125–140. Ithaca, NY: Cornell University Press.
- Kristensen, N. P. 1999. Phylogeny of endopterygote insects, the most successful lineage of living organisms. *European Journal of Entomology* 96: 237–253.
- Lambkin, K. J. 1986. A revision of the Australian Mantispidae (Insecta: Neuroptera) with a contribution to the classification of the family. II. Calomantispinae and Mantispinae. *Australian Journal of Zoology, supplement* 117: 1–113.
- Linnaeus, C. [Linné, K., von]. 1758. *Systema Naturae per Regna Tria Naturae, Secundum Classes, Ordines, Genera, Species, cum Characteribus, Differentiis, Synonymis, Locis*, vol. 1, ed. 10, Reformata. Holmiae [Stockholm]: Salviae.
- Martínez-Delclòs, X. 1991. Lower Cretaceous insects from Spain. In Z. Kielan-Jaworowska, N. Heintz, and H.A. Nakrem (editors), *Fifth Symposium on Mesozoic Terrestrial Ecosystems and Biota. Contributions from the Paleontological Museum, University of Oslo* 364: 47–48.
- Martins-Neto, R. G., and A. Nel. 1992. Un nouveau fossile de Raphidioptère de la formation Santana, Crétacé inférieur du Brésil (Neuropteroidea, Raphidioptera). *Bulletin de la Société*

- Entomologique de France 97: 425–428. [Publ. date: 1993]
- Martins-Neto, R. G., and M. A. Vulcano. 1989. Primeiro registro de Raphidioptera (Neuropteroidea) na Formação Santana (Cretáceo Inferior), Bacia do Araripe, nordeste do Brasil. *Revista Brasileira de Entomologia* 34: 241–249.
- Martynov, A. V. 1925a. To the knowledge of fossil insects from Jurassic beds in Turkestan. 1. Raphidioptera. *Izvestiya Rossiiskoi Akademii Nauk*, 6 seriya [Bulletin de l'Académie des Sciences de Russie, 6 série] 19: 233–246. [This journal issue is often cited as *Bulletin de l'Académie des Sciences de l'URSS*; however, the serial did not acquire that particular name until later in the same volume: e.g., see immediately following citation.]
- Martynov, A. V. 1925b. To the knowledge of fossil insects from Jurassic beds in Turkestan. 2. Raphidioptera (continued), Orthoptera (s.l.), Odonata, Neuroptera. *Izvestiya Akademii Nauk Soyuz Sovetskikh Sotsialisticheskikh Respublik*, 6 seriya [Bulletin de l'Académie des Sciences de l'Union des Républiques Soviétiques Socialistes, 6 série] 19: 569–598.
- Martynova, O. M. 1947. Two new snakeflies from the Jurassic shales of Karatau. *Doklady Akademii Nauk SSSR* [Reports of the Academy of Sciences, USSR] 56: 635–637. [In Russian]
- Martynova, O. M. 1961. Recent and fossil snakeflies (Insecta, Raphidioptera). *Paleontologicheskii Zhurnal* 1961: 73–83. [In Russian]
- Menge, A. 1856. *Lebenszeichen vorweltlicher, im Bernstein eingeschlossener Thiere*. Danzig: Kafemann.
- Mickoleit, G. 1973. Über den Ovipositor der Neuropteroidea und Coleoptera und seine phylogenetische Bedeutung (Insecta, Holometabola). *Zeitschrift für Morphologie der Tiere* 74: 37–64.
- Nascimbene, P., and H. Silverstein. 2000. The preparation of fragile Cretaceous ambers for conservation and study of organismal inclusions. *In* D. Grimaldi (editor), *Studies on Fossils in Amber, with Particular Reference to the Cretaceous of New Jersey*: 93–102. Leiden: Backhuys.
- Navás, L. 1915a. Neurópteros nuevos ó poco conocidos (Quinta serie). *Memorias de la Real Academia de Ciencias y Artes de Barcelona* 11: 455–480.
- Navás, L. 1915b. Notas sobre Rafídidos (Ins. Neur.). *Revista de la Real Academia de Ciencias Exactas, Físicas y Naturales de Madrid* 13: 784–797, 860–874.
- Navás, L. 1916. Notas sobre el orden de los Rafidópteros (Ins.). *Memorias de la Real Academia de Ciencias y Artes de Barcelona* 12: 507–513.
- Navás, L. 1919. Rafidópteros (Ins.) nou. *Arxius de l'Institut d'Estudis Catalans, Seccio de Ciències*, Barcelona 1918: 91–93.
- Nel, A. 1993. Nouveaux Raphidioptères fossiles de Cénozoïque de France et d'Espagne (Raphidioptera, Raphidiidae, Inocelliidae). *EPHE Biologie et Evolution des Insectes* 6: 99–108.
- Nel, A., Y. Séméria, and R. G. Martins-Neto. 1990. Un Raphidioptera fossile du Crétacé inférieur du Brésil (Neuropteroidea). *Neuroptera International* 6: 27–37.
- Novokshonov, V. G. 1998a. New fossil insects (Insecta: Grylloblattida, Caloneurida, Hypoperlida?, ordinis incertis) from the Kungurian beds of the middle Urals. *Paleontologicheskii Zhurnal* 1998: 41–46. [In Russian]
- Novokshonov, V. G. 1998b. New fossil insects (Insecta: Grylloblattida, Caloneurida, Hypoperlida?, ordinis incertis) from the Kungurian beds of the middle Urals. *Paleontological Journal* 32: 362–368. [English transl. of Novokshonov, 1998a]
- Oswald, J. D. 1990. Raphidioptera. *In* D.A. Grimaldi (editor), *Insects from the Santana Formation, Lower Cretaceous, of Brazil*. *Bulletin of the American Museum of Natural History* 195: 154–163.
- Peñalver, E., X. Martínez-Delclòs, and A. Arillo. 1999. Yacimientos con insectos fósiles en España. *Revista Española de Paleontología* 14: 67–82.
- Pictet-Baraban, F. J., and H. Hagen. 1856. Die im Bernstein befindlichen Neuropteren der Vorwelt. *In* G. Berendt (editor), *Die im Bernstein befindlichen organischen Reste der Vorwelt* 41–126. Berlin: Nicolaischen Buchhandlung.
- Ponomarenko, A. G. 1988. New Mesozoic insects. *Trudy Sovmestnaya Sovetskogo-Mongolskaya Paleontologicheskaya Ekspeditsiya* [Transactions of the Joint Soviet-Mongolian Paleontological Expedition] 33: 71–80, 94. [In Russian]
- Ponomarenko, A. G. 1993. Lower Cretaceous shake-flies [sic] from Transbaikalia. *Trudy Paleontologicheskogo Instituta, Akademii Nauk SSSR* [Transactions of the Paleontological Institute, Academy of Sciences USSR] 252: 60–80. [In Russian]
- Rasnitsyn, A. P., and A. J. Ross. 2000. A preliminary list of arthropod families present in the Burmese amber collection at the Natural History Museum, London. *Bulletin of the Natural History Museum (Geology)* 56: 21–24.
- Ren, D. 1994. A new discovery of snake-flies (Insecta) from late Jurassic of Beipiao, Liaoning. *Professional Papers of Stratigraphy and Pale-*

- ontology 25: 131–140. [In Chinese, with English summary]
- Ren, D. 1997. Studies on the late Mesozoic snakeflies of China (Raphidioptera: Baissopteridae, Mesoraphidiidae, Alloraphidiidae). *Acta Zootaxonomica Sinica* 22: 172–188. [In Chinese, with English summary]
- Ren, D., and Y.-C. Hong. 1994. A cladistic study on the familial phylogeny of fossil and living Raphidioptera (Insecta). *Bulletin of the Chinese Academy of Geological Sciences* 29: 103–117. [In Chinese, with English summary]
- Ren, D., L. Lu, Z. Guo, and S. Ji. 1995. Fauna and Stratigraphy of Jurassic-Cretaceous in Beijing and the Adjacent Areas. Beijing: Seismic Publishing House. [In Chinese, with English summary]
- Rohwer, S. A. 1909. Three new fossil insects from Florissant, Colorado. *American Journal of Science* 28: 533–536.
- Scudder, S. H. 1890. The Tertiary insects of North America. Report of the United States Geological Survey of the Territories 13: 1–663.
- Sharov, A. G. 1968. Phylogeny of the Orthopteroidea. *Trudy Paleontologicheskogo Instituta, Akademii Nauk SSSR* [Transactions of the Paleontological Institute, Academy of Sciences USSR] 118: 1–216. [In Russian]
- Sharov, A. G. 1971. Phylogeny of the Orthopteroidea. Jerusalem: Israel Program for Scientific Translations, Ltd. [English transl. of Sharov, 1968]
- Shcherbakov, D. E. 1995. A new genus of the Paleozoic order Hypoperlida. *Russian Entomological Journal* 3: 33–36.
- Shiple, A. E. 1904. The orders of insects. *Zoologischer Anzeiger* 27: 259–262.
- Storozhenko, S. Y. 1998. Systematics, Phylogeny, and Evolution of the Grylloblattida (Insecta: Grylloblattida). Vladivostok: Dal’Nauka. [In Russian]
- Storozhenko, S. Y., and V. G. Novokshonov. 1995. Revision of the Permian family Sojanoraphidiidae (Grylloblattida). *Russian Entomological Journal* 3: 37–39.
- Vršanský, P., S. Y. Storozhenko, C. C. Labandeira, and P. Ihringova. 2001. *Galloisiana olgae* sp. nov. (Grylloblattodea: Grylloblattidae) and the paleobiology of a relict order of insects. *Annals of the Entomological Society of America* 94: 179–184.
- Weidner, H. 1958. Einige interessante Insektenlarven aus der Bernsteininkluden-Sammlung des geologischen Staatsinstituts Hamburg (Odonata, Coleoptera, Megaloptera, Planipennia). *Mitteilungen aus dem Geologischen Staatsinstitut in Hamburg* 27: 50–68.
- Weitschat, W., and W. Wichard. 1998. Atlas der Pflanzen und Tiere im Baltischen Bernstein. München [Munich]: Verlag Friedrich Pfeil.
- Whalley, P. E. S. 1985. The systematics and paleogeography of the Lower Jurassic insects of Dorset, England. *Bulletin of the British Museum (Natural History), Geology* 39: 107–189.
- Wheeler, W. C., M. [F.] Whiting, Q. D. Wheeler, and J. M. Carpenter. 2001. The phylogeny of the extant hexapod orders. *Cladistics* 17: 113–169.
- Whiting, M. F., J. C. [sic: M] Carpenter, Q. D. Wheeler, and W. C. Wheeler. 1997. The Strepsiptera problem: Phylogeny of the holometabolous insect orders inferred from 18S and 28S ribosomal DNA sequences and morphology. *Systematic Biology* 46: 1–68.
- Willmann, R. 1994. Raphidiodea aus dem Lias und die Phylogenie der Kamelhalsfliegen (Insecta: Holometabola). *Paläontologische Zeitschrift* 68: 167–197.
- Yang, C.-K. 1998. Descriptions of new species *Raphidia* (*Yuraphidia*) *duomilia* and a new subgenus of this genus (Raphidioptera: Raphidiidae). *In* *Fauna and Taxonomy of Insects in Henan* [vol. 2] 59–61. [In Chinese, with English summary]
- Zherikhin, V. V., and A. J. Ross. 2000. A review of the history, geology and age of Burmese amber (Burmite). *Bulletin of the Natural History Museum (Geology)* 56: 3–10.

APPENDIX 1

TAXONOMIC CATALOG OF FOSSIL SNAKEFLIES (RAPHIDIOPTERA)

The following preliminary catalog attempts to summarize the named fossil species of snakeflies. Undescribed or unnamed fossils are not included as are subsequent references (except for those that make taxonomic changes, e.g., new combinations, synonymies, nomina nova). Taxonomic summaries are provided for all species and for all extinct higher taxa. Names in quotation marks are those believed to be dubiously assigned as to genus; e.g., owing to the absence of information on genitalic characters fossil species presumed to be of *Raphidia* cannot be confidently placed in this genus. The names *Archiinocellia* and *Arariperaphidia* are listed as incertae sedis. Names are in alphabetical order; refer to Table 1 in the text for an indication of the geological range of each family. A dagger (†) indicates an extinct taxon. A revised, phylogenetic classification of fossil snakeflies is presently in progress and will hopefully further clarify affinities of the species outlined below (Engel, in prep.).

A plethora of ill-defined snakefly families, genera, and species from Central and Eastern Asia has been cavalierly proposed (e.g., Hong, 1982, 1992a, 1992b, 1992c; Hong and Chang, 1989; Ponomarenko, 1988, 1993; Ren, 1994, 1997; Ren et al., 1995). Many of these taxa are founded on one or two minute characters (e.g., the presence or absence of a single crossvein!) and upon characters that are either not diagnostic (i.e., occur in other families) or rampantly variable among species within well-founded genera or even within a single species! Furthermore, several of these genera seem to have been randomly assigned to families without a careful consideration of the character basis for doing so. Several of these genera simply lack all defining features of the particular family in which they were originally placed, while exhibiting all of the characters of another family (and frequently of a previously proposed genus!). In instances where the position of a given group or species is clear I have proposed a transfer, new combination, and/or synonymy. It must be noted, however, that this "housekeeping" is merely preliminary and more detailed work will be required. Certainly several of the Asian species will prove to be synonyms, but I have tentatively retained them as valid species herein.

The following taxonomic changes are proposed herein: **New taxa:** Pricaeenigmatomorpha, new suborder; Priscaenigmatidae, new family for *Priscaenigma* and *Hondelagia*; and *Cretoaphidiopsis*, new name for *Cretoaphidia* Willmann (non Ponomarenko). **New synonymies:** Huaxiaraphidiidae, Sinoraphidiidae, and Jilinoraphidiidae, new synonyms of Mesoraphidiidae; *Cratoaphidia* and *Rudiraphidia*, new synonyms of *Baissoptera*; *Miofibla*, new synonym of *Fibla* (*Reisserella*); *Caloraphidia*, *Mioraphidia*, *Phiradia*, *Xynoraphidia*, and *Yanoraphidia*, new synonyms of *Mesoraphidia*. **New combinations:** *Baissoptera pulchra* (Martins-Neto and Nel), *Cretoaphidiopsis bontsaganensis* (Ponomarenko), *Fibla* (*Reisserella*) *cerdanica* (Nel), *Mesoraphidia gaoi* (Ren), *M. glossophylla* (Ren), *M. longistigmata* (Ren), *M. myrioneura* (Ren), *M. obliquivenatica* (Ren), *M. polyphlebia* (Ren), *M. shangyuanensis* (Ren), and *Pararaphidia vitimica* (Martynova). **Resurrected combinations:** *Baissoptera liaoningensis* Ren, *Mesoraphidia furcivenata* Ren, and *M. pterostigmatis* Martynova.

ORDER RAPHIDOPTERA NAVÁS

Family †ALLORAPHIDIIDAE Carpenter

†Alloraphidiidae Carpenter, 1967 [1968]: 270.
Type genus: †*Alloraphidia* Carpenter, 1967.

Genus †*Alloraphidia* Carpenter

†*Alloraphidia* Carpenter, 1967 [1968]: 270. Type species: †*Alloraphidia dorfi* Carpenter, 1967, monobasic and original designation.

†*Alloraphidia anomala* Ren

†*Alloraphidia anomala* Ren, 1997: 181. Lower Cretaceous, Beipiao, Liaoning, China.

†*Alloraphidia asiatica* Ponomarenko

†*Alloraphidia asiatica* Ponomarenko, 1993: 75. Upper Jurassic–Lower Cretaceous, Baisa, Buryat, Russia.

†*Alloraphidia dorfi* Carpenter

†*Alloraphidia dorfi* Carpenter, 1967 [1968]: 271. Middle Cretaceous, Labrador, Canada.

†*Alloraphidia petrosa* Ponomarenko

†*Alloraphidia petrosa* Ponomarenko, 1988: 80. Lower Cretaceous, Mongolia.

Genus †*Archeraphidia* Ponomarenko

†*Archeraphidia* Ponomarenko, 1988: 78. Type species: †*Archeraphidia yakowlewi* Ponomarenko, 1988, original designation.

†*Archeraphidia baisensis* Ponomarenko

†*Archeraphidia baisensis* Ponomarenko, 1993: 79. Upper Jurassic–Lower Cretaceous, Baisa, Buryat, Russia.

†*Archeraphidia hosbayari* Ponomarenko

†*Archeraphidia hosbayari* Ponomarenko, 1988: 79. Lower Cretaceous, Mongolia.

†*Archeraphidia yakowlewi* Ponomarenko

†*Archeraphidia yakowlewi* Ponomarenko, 1988: 78. Lower Cretaceous, Mongolia.

Genus †*Pararaphidia* Willmann

†*Pararaphidia* Willmann, 1994: 178. Type species: †*Alloraphidia deserta* Ponomarenko, 1988, monobasic and original designation.

COMMENTS: This genus is particularly noteworthy for blurring the distinctions between Mesoraphidiidae and Alloraphidiidae. It is placed here

with hesitation. Willmann (1994: 180) stated that there were two species of *Pararaphidia*, but did not identify the second species. Herein I identify a second species, *Pararaphidia vitimica* (Martynova), but it is apparently not the one Willmann had in mind since he presumably considered *Proraphidia* to contain the two species originally placed there by Martynova (1947, 1961).

†*Pararaphidia deserta* (Ponomarenko)

†*Alloraphidia deserta* Ponomarenko, 1988: 79. Lower Cretaceous, Mongolia.

†*Pararaphidia deserta* (Ponomarenko); Willmann, 1994: 178.

†*Pararaphidia vitimica* (Martynova),
new combination

†*Proraphidia vitimica* Martynova, 1961: 82. Upper Jurassic–Lower Cretaceous, Baisa, Buryat, Russia.

†*Alloraphidia vitimica* (Martynova); Ponomarenko, 1993: 78.

Family †BAISSOPTERIDAE Martynova

†Baissopteridae Martynova, 1961: 80. Type genus: †*Baissoptera* Martynova, 1961.

†Baissopteridae Hong, 1989: 293. *Lapsus calami*.

Genus †*Austroraphidia* Willmann

†*Austroraphidia* Willmann, 1994: 177. Type species: †*Raphidia brasiliensis* Nel, Séméria, and Martins-Neto, 1990, monobasic and original designation.

COMMENTS: This genus is perhaps best considered a junior subjective synonym of *Baissoptera*; however, the distal position of MA relative to the origination of MP in the forewing, the slightly fewer number of cells in the posterior half of the wing, and the exceptionally short M+ CuA in the hind wing (i.e., M and CuA separate almost immediately distad divergence from stem of R) suggests that this species is indeed generically distinct.

†*Austroraphidia brasiliensis*
(Nel, Séméria, and Martins-Neto)

†*Raphidia brasiliensis* Nel, Séméria, and Martins-Neto, 1990: 29. Lower Cretaceous, Ceará, Brazil.

†*Austroraphidia brasiliensis* (Nel, Séméria, and Martins-Neto); Willmann, 1994: 177.

Genus †*Baissoptera* Martynova

[Upper Jurassic, Lower Cretaceous]

†*Baissoptera* Martynova, 1961: 80. Type species: †*Baissoptera martinsoni* Martynova, 1961, original designation.

†*Cratoraphidia* Martins-Neto and Nel, 1992: 426. Type species: †*Cratoraphidia pulchra* Martins-Neto and Nel, 1992, monobasic and original designation. NEW SYNONYMY.

†*Rudiraphidia* Ren, 1997: 175. Type species: †*Baissoptera liaoningensis* Ren, 1994, monobasic and original designation. NEW SYNONYMY.

COMMENTS: Both genera differ only in features that are known to be variable among living species and therefore poor characters upon which to establish new genera. There is no truly diagnostic character upon which to distinguish these groups and they are therefore synonymized here.

†*Baissoptera brasiliensis* Oswald

†*Baissoptera brasiliensis* Oswald, 1990: 154. Lower Cretaceous, Ceará, Brazil.

†*Baissoptera cellulosa* Ponomarenko

†*Baissoptera cellulosa* Ponomarenko, 1993: 64. Upper Jurassic–Lower Cretaceous, Baisa, Buryat, Russia.

†*Baissoptera elongata* Ponomarenko

†*Baissoptera elongata* Ponomarenko, 1993: 66. Upper Jurassic–Lower Cretaceous, Baisa, Buryat, Russia.

†*Baissoptera euneura* Ren

†*Baissoptera euneura* Ren, 1997: 173. Lower Cretaceous, Beipiao, Liaoning, China.

†*Baissoptera grandis* Ren

†*Baissoptera grandis* Ren in Ren et al., 1995: 97. Lower Cretaceous, Beipiao, Liaoning, China.

†*Baissoptera liaoningensis* Ren,
resurrected combination

†*Baissoptera liaoningensis* Ren, 1994: 132. Lower Cretaceous, Beipiao, Liaoning, China.

†*Rudiraphidia liaoningensis* (Ren); 1997: 176.

†*Baissoptera martinsoni* Martynova

†*Baissoptera martinsoni* Martynova, 1961: 80. Upper Jurassic–Lower Cretaceous, Baisa, Buryat, Russia.

†*Baissoptera kolosnitsynae* Martynova, 1961: 81. Upper Jurassic–Lower Cretaceous, Baisa, Buryat, Russia.

†*Baissoptera minima* Ponomarenko

†*Baissoptera minima* Ponomarenko, 1993: 63. Upper Jurassic–Lower Cretaceous, Baisa, Buryat, Russia.

†*Baissoptera pulchra* (Martins-Neto and Nel), new combination

†*Cratoraphidia pulchra* Martins-Neto and Nel, 1992: 427. Lower Cretaceous, Ceará, Brazil.

†*Baissoptera sibirica* Ponomarenko

†*Baissoptera sibirica* Ponomarenko, 1993: 66. Upper Jurassic–Lower Cretaceous, Baisa, Buryat, Russia.

Genus †*Cretinocellia* Ponomarenko

†*Cretinocellia* Ponomarenko, 1988: 74. Type species: †*Cretinocellia cellulosa* Ponomarenko, 1988, original designation.

†*Cretinocellia cellulosa* Ponomarenko

†*Cretinocellia cellulosa* Ponomarenko, 1988: 76. Lower Cretaceous, Mongolia.

Genus †*Cretoaphidia* Ponomarenko

†*Cretoaphidia* Ponomarenko, 1993: 68. Type species: †*Cretoaphidia certa* Ponomarenko, 1993, original designation.

†*Cretoaphidia certa* Ponomarenko

†*Cretoaphidia certa* Ponomarenko, 1993: 68. Upper Jurassic–Lower Cretaceous, Baisa, Buryat, Russia.

†*Cretoaphidia macrocella* Ponomarenko

†*Cretoaphidia macrocella* Ponomarenko, 1993: 69. Upper Jurassic–Lower Cretaceous, Baisa, Buryat, Russia.

†*Cretoaphidia magna* Ponomarenko

†*Cretoaphidia magna* Ponomarenko, 1993: 71. Upper Jurassic–Lower Cretaceous, Baisa, Buryat, Russia.

†*Cretoaphidia reticulata* Ponomarenko

†*Cretoaphidia reticulata* Ponomarenko, 1993: 69. Upper Jurassic–Lower Cretaceous, Baisa, Buryat, Russia.

†*Cretoaphidiopsis*, nomen novum

†*Cretoaphidia* Willmann, 1994: 176. Type species: †*Cretinocellia bontsaganensis* Ponomarenko, 1988, monobasic and original designation. *Nomen praeoccupatum* (nec †*Cretoaphidia* Ponomarenko, 1993).

ETYMOLOGY: The new genus-group name is a combination of the original name *Cretoaphidia* and the suffix *-opsis* (meaning “looking like”). The name is feminine.

†*Cretoaphidiopsis bontsaganensis* (Ponomarenko), new combination

†*Cretinocellia bontsaganensis* Ponomarenko, 1988: 76. Lower Cretaceous, Mongolia.

†*Cretoaphidia bontsaganensis* (Ponomarenko); Willmann, 1994: 176.

Genus †*Lugala* Willmann

†*Lugala* Willmann, 1994: 176. Type species: †*Baissoptera longissima* Ponomarenko, 1988, monobasic and original designation.

†*Lugala longissima* (Ponomarenko)

†*Baissoptera longissima* Ponomarenko, 1988: 74. Lower Cretaceous, Mongolia.

†*Lugala longissima* (Ponomarenko); Willmann, 1994: 176.

Family INOCELLIIDAE Navás

Genus †*Electrinocellia* Engel

†*Electrinocellia* Engel, 1995: 192. Type species: †*Inocellia peculiaris* Carpenter, 1956, monobasic and original designation.

†*Electrinocellia peculiaris* (Carpenter)

†*Inocellia peculiaris* Carpenter, 1956: 80. Middle Eocene (Lutetian), Baltic amber.

†*Electrinocellia peculiaris* (Carpenter); Engel, 1995: 192.

Genus *Fibla* Navás

Fibla Navás, 1915a: 477. Type species: *Fibla hesperica* Navás, 1915a, monobasic and original designation.

Burcha Navás, 1915a: 478. Type species: *Inocellia maclachlani* Albarda, 1891, monobasic and original designation.

Estoca Navás, 1919: 91. Type species: *Estoca peyerimhoffi* Navás, 1919, monobasic.

Inocellia (Reisserella) H. Aspöck and U. Aspöck, 1971: 271. Type species: *Inocellia (Reisserella) pasiphae* H. Aspöck and U. Aspöck, 1971, monobasic and original designation.

†*Miofibla* Nel, 1993: 105. Type species: †*Miofibla cerdanica* Nel, 1993, monobasic and original designation. NEW SYNONYMY.

COMMENTS: *Miofibla* does not differ significantly from *Fibla* sensu lato and possesses the distinctive feature of five medial cells beyond MP in the forewing that is indicative of the subgenus *Reisserella*. I have therefore considered *Miofibla* synonymous with *Fibla* (and the subgenus *Reisserella* in particular).

†*Fibla (Fibla) carpenteri* Engel

†*Fibla (Fibla) carpenteri* Engel, 1995: 188. Middle Eocene (Lutetian), Baltic amber.

†*Fibla (Reisserella) cerdanica* (Nel),
new combination

†*Miofibla cerdanica* Nel, 1993: 105. Upper Miocene, Bellver-en-Cerdaña, Spain.

†“*Fibla*” *erigena* (Menge)

†*Raphidia erigena* Menge, 1856: 15. *Nomen nudum*.

†*Raphidia (Inocellia) erigena* Menge In Pictet-Baraban and Hagen, 1856: 83. Middle Eocene (Lutetian), Baltic amber.

†*Inocellia erigena* (Menge); Scudder, 1890: 155.

†*Inocellia eogena* Scudder, 1890: 156. *Lapsus calami*.

†*Fibla erigena* (Menge); Carpenter, 1956: 79.

COMMENTS: Authorship of this species is often attributed to Hagen (e.g., Scudder, 1890; Carpenter, 1956; Oswald, 1990). Although the name was indeed first made available in the work of Pictet-Baraban and Hagen (1856), these authors clearly indicate those taxa that they propose as new and attribute to themselves while explicitly indicating respective authorship of other taxa. According to ICZN (1999: Art. 50.1.1) when explicit authorship is given to an individual other than the authors of the work, then authorship is to be attributed to that alternative person (in the present instance, to Menge).

†“*Fibla*” *exusta* (Cockerell and Custer)

†*Inocellia exusta* Cockerell and Custer, 1925: 295. Eocene-Oligocene boundary, Florissant, Colorado.

†*Fibla exusta* (Cockerell and Custer); Carpenter, 1936: 152.

Family †MESORAPHIDIIDAE Martynov

†Mesoraphidiidae Martynov, 1925a: 235. Type genus: †*Mesoraphidia* Martynov, 1925a.

†Sinoraphidiidae Hong, 1982: 152. Type genus: †*Sinoraphidia* Hong, 1982. NEW SYNONYMY.

†Jilinaraphidiidae Hong and Chang, 1989: 291. Type genus: †*Jilinaraphidia* Hong and Chang, 1989. NEW SYNONYMY.

†Huaxiaraphidiidae Hong, 1992a: 101. Type genus: †*Huaxiaraphidia* Hong, 1992a. NEW SYNONYMY.

†Mesoraphidae Hong, 1992c: 3. *Lapsus calami*.

COMMENTS: The status of Sinoraphidiidae was discussed in the text (see above) and justification for its synonymy is not repeated here. The family Jilinaraphidiidae was based on an incompletely preserved specimen (as indicated by Hong and Chang’s figures) and the principal apomorphy that would perhaps justify its status is, in fact, an artifact of preservation. The absence of crossveins (and therefore cells in the forewing) would appear to be a remarkable apomorphy for the group. However, Hong and Chang’s figures show a specimen with incompletely preserved venation (e.g., several of the longitudinal veins are not preserved over their length and are interrupted at many points). Some crossveins between branches of R are faintly preserved, but others are not. Since crossveins and the pterostigma are less sclerotized or pigmented than longitudinal veins, it is not surprising that in a specimen in which the stronger (i.e., longitudinal) veins are not entirely preserved, the crossveins in the same areas would be similarly missing. Until newer material of *Jilinaraphidia* is discovered and the absence of such venation authoritatively demonstrated, the justification for Jilinaraphidiidae is entirely unfounded. The genus appears, based on the limited evidence, to be a valid one within the Mesoraphidiidae.

Genus †*Baisoraphidia* Ponomarenko

†*Baisoraphidia* Ponomarenko, 1993: 73. Type species: †*Baisoraphidia glossopteron* Ponomarenko, 1993, original designation.

†*Baisoraphidia glossopteron* Ponomarenko

†*Baisoraphidia glossopteron* Ponomarenko, 1993: 74. Upper Jurassic–Lower Cretaceous, Baisa, Buryat, Russia.

†*Baisoraphidia orientalis* Ponomarenko

†*Baisoraphidia orientalis* Ponomarenko, 1993: 75. Upper Jurassic–Lower Cretaceous, Baisa, Buryat, Russia.

Genus †*Huaxiaraphidia* Hong

†*Huaxiaraphidia* Hong, 1992a: 101. Type species: †*Huaxiaraphidia sinensis* Hong, 1992a, original designation.

COMMENTS: This genus may be a synonym of *Mesoraphidia*. Examination of the holotypes is required to confirm some of Hong's (1992a) dubious characters. *Huaxiaraphidia shandongensis* Hong does not appear to be congeneric with *H. sinensis* Hong.

†*Huaxiaraphidia shandongensis* Hong

†*Huaxiaraphidia shandongensis* Hong, 1992a: 102. Lower Cretaceous, Beipiao, Liaoning, China.

†*Huaxiaraphidia sinensis* Hong

†*Huaxiaraphidia sinensis* Hong, 1992a: 102. Lower Cretaceous, Beipiao, Liaoning, China.

Genus †*Jilinatoraphidia* Hong and Chang

†*Jilinatoraphidia* Hong and Chang, 1989: 291. Type species: †*Jilinatoraphidia dalaziensis* Hong and Chang, 1989, monobasic and original designation.

†*Jilinatoraphidia dalaziensis* Hong and Chang

†*Jilinatoraphidia dalaziensis* Hong and Chang, 1989: 291. Lower Cretaceous, Zhixin, Jilin Province, China.

Genus †*Kezuoraphidia* Willmann

†*Kezuoraphidia* Willmann, 1994: 176. Type species: †*Xuraphidia kezuensis* Hong, 1992c, monobasic and original designation.

COMMENTS: This genus may eventually prove to be synonymous with *Baisoraphidia*.

†*Kezuoraphidia kezuensis* (Hong)

†*Xuraphidia kezuensis* Hong, 1992c: 4. Lower Cretaceous, Kezuo, Liaoning, China.

†*Kezuoraphidia kezuensis* (Hong), Willmann, 1994: 176.

Genus †*Mesoraphidia* Martynov

†*Mesoraphidia* Martynov, 1925a: 235. Type species: †*Mesoraphidia grandis* Martynov, 1925a, original designation.

†*Phiradia* Willmann, 1994: 178. Type species: †*Mesoraphidia pterostigmalis* Martynova, 1947, monobasic and original designation. TENTATIVE SYNONYMY.

†*Yanoraphidia* Ren in Ren et al., 1995: 98. Type species: †*Yanoraphidia gaoi* Ren in Ren et al., 1995, monobasic and original designation. NEW SYNONYMY.

†*Mioraphidia* Ren, 1997: 178. Type species: †*Mesoraphidia furcivenata* Ren in Ren et al., 1995, monobasic and original designation. NEW SYNONYMY.

†*Xynoraphidia* Ren, 1997: 183. Type species: †*Archeraphidia shangyuanensis* Ren, 1994, original designation. NEW SYNONYMY.

†*Caloraphidia* Ren, 1997: 183. Type species: †*Caloraphidia glossophylla* Ren, 1997, monobasic and original designation. NEW SYNONYMY.

COMMENTS: Several species placed in the family Alloraphidiidae and the genus *Alloraphidia* or allied genera by Ren (1994) and Ren et al. (1995) are obviously misplaced. None of these species exhibit the elongate wings, MA strongly distad origination of MP (in Ren's species MA is only slightly distad MP origination, as in some mesoraphidiid species), the apparent trifurcation of the stems of R, M, and CuA in the forewing (in Ren's species M and CuA are fused for some distance after separating from R), and the short pterostigma that are typical of *Alloraphidia*. As I have already mentioned the distinctions between the Alloraphidiidae and Mesoraphidiidae are weak and the former should perhaps be placed within Mesoraphidiidae. Despite this, none of the Chinese species that I have transferred have synapomorphies that would ally them with *Alloraphidia* even if alloraphidiids were considered a clade of Mesoraphidiidae (at any rank, subfamily or tribe).

†*Mesoraphidia amoena* Ren

†*Mesoraphidia amoena* Ren, 1997: 181. Lower Cretaceous, Beipiao, Liaoning, China.

†*Mesoraphidia elongata* Martynov

†*Mesoraphidia elongata* Martynov, 1925a: 240. Upper Jurassic, Kazakhstan.

†*Mesoraphidia furcivenata* Ren, resurrected combination

†*Mesoraphidia furcivenata* Ren in Ren et al., 1995: 98. Lower Cretaceous, Liaoning, China.

- †*Mioraphidia furcivenata* (Ren); Ren, 1997: 179.
- †*Mesoraphidia gaoi* (Ren), new combination
- †*Yanoraphidia gaoi* Ren in Ren et al., 1995: 99. Lower Cretaceous, Liaoning, China.
- †*Mesoraphidia glossophylla* (Ren), new combination
- †*Caloraphidia glossophylla* Ren, 1997: 183. Lower Cretaceous, Beipiao, Liaoning, China.
- †*Mesoraphidia gobiensis* Ponomarenko
- †*Mesoraphidia gobiensis* Ponomarenko, 1988: 73. Upper Jurassic, Mongolia.
- †*Mesoraphidia grandis* Martynov
- †*Mesoraphidia grandis* Martynov, 1925a: 236. Upper Jurassic, Kazakhstan.
- †*Mesoraphidia heteroneura* Ren
- †*Mesoraphidia heteroneura* Ren, 1997: 179. Lower Cretaceous, Beipiao, Liaoning, China.
- †*Mesoraphidia inaequalis* Martynov
- †*Mesoraphidia inaequalis* Martynov, 1925b: 569. Upper Jurassic, Kazakhstan.
- †*Mesoraphidia longistigmosa* (Ren), new combination
- †*Alloraphidia longistigmosa* Ren, 1994: 133. Lower Cretaceous, Beipiao, Liaoning, China.
- †*Mesoraphidia luzzii* Grimaldi
- †*Mesoraphidia luzzii* Grimaldi, 2000: 261. Upper Cretaceous (Turonian), New Jersey amber.
- †*Mesoraphidia myrioneura* (Ren), new combination
- †*Phiradia myrioneura* Ren, 1997: 178. Lower Cretaceous, Beipiao, Liaoning, China.
- †*Mesoraphidia obliquivenatica* (Ren), new combination
- †*Alloraphidia obliquivenatica* Ren, 1994: 134. Lower Cretaceous, Beipiao, Liaoning, China.
- †*Alloraphidia obligivenata* Hong, 1998: 293. *Lapsus calami*.
- †*Mesoraphidia parvula* Martynov
- †*Mesoraphidia parvula* Martynov, 1925a: 241. Upper Jurassic, Kazakhstan.
- †*Mesoraphidia polyphlebia* (Ren), new combination
- †*Archeraphidia polyphlebia* Ren, 1994: 136. Lower Cretaceous, Beipiao, Liaoning, China.
- †*Xynoraphidia polyphlebia* (Ren); Ren, 1997: 183.
- †*Mesoraphidia pterostigmalis* Martynova, resurrected combination
- †*Mesoraphidia pterostigmalis* Martynova, 1947: 635. Upper Jurassic, Kazakhstan.
- †*Phiradia pterostigmalis* (Martynova); Willmann, 1994: 178.
- †*Mesoraphidia shangyuanensis* (Ren), new combination
- †*Archeraphidia shangyuanensis* Ren, 1994: 135. Lower Cretaceous, Beipiao, Liaoning, China.
- †*Xynoraphidia shangyuanensis* (Ren); Ren, 1997: 183.
- †*Mesoraphidia similis* Martynov
- †*Mesoraphidia similis* Martynov, 1925a: 238. Upper Jurassic, Kazakhstan.
- †*Mesoraphidia sinica* Ren
- †*Mesoraphidia sinica* Ren, 1997: 180. Lower Cretaceous, Beipiao, Liaoning, China.
- Genus †*Metaraphidia* Whalley
- †*Metaraphidia* Whalley, 1985: 147. Type species: †*Metaraphidia confusa* Whalley, 1985, monobasic and original designation.
- COMMENTS: This is perhaps the most basal genus of Mesoraphidiidae, retaining the plesiomorphic separation of A3 and A2 in the forewing (fused in other Mesoraphidiidae). This plesiomorphic feature is also present in the Baissopteridae. Willmann (1994) provides a corrected diagnosis for the genus.
- †*Metaraphidia confusa* Whalley
- †*Metaraphidia confusa* Whalley, 1985: 148. Lower Jurassic (Liassic), England.

†*Metaraphidia vahldieki* Willmann

†*Metaraphidia vahldieki* Willmann, 1994: 174. Lower Jurassic (Liassic), Germany.

Genus †*Nanoraphidia* Engel

†*Nanoraphidia* Engel, herein. Type species: †*Nanoraphidia electroburnmica* Engel, herein, monobasic and original designation.

†*Nanoraphidia electroburnmica* Engel

†*Nanoraphidia electroburnmica* Engel, herein. Upper Cretaceous (Cenomanian) amber, Myanmar.

Genus †*Proraphidia* Martynova

†*Proraphidia* Martynova, 1947: 636. Type species: †*Proraphidia turkestanica* Martynova, 1947, monobasic and original designation.

†*Pararaphidia* Hong, 1992c: 12. *Lapsus calami*.

†*Proraphidia turkestanica* Martynova

†*Proraphidia turkestanica* Martynova, 1947: 636. Upper Jurassic, Karatau, Kazakhstan.

Genus †*Siboptera* Ponomarenko

†*Siboptera* Ponomarenko, 1993: 71. Type species: †*Siboptera eurydictyon* Ponomarenko, 1993, original designation.

†*Liaoraphidia* Ren, 1994: 132. Type species: †*Liaoraphidia fornicata* Ren, 1994, monobasic and original designation.

†*Siboptera* Ren, 1997: 176. *Lapsus calami*.

COMMENTS: *Siboptera* was originally proposed by Ponomarenko (1993) in the family Baissopteridae despite lacking all of the apomorphic characteristics of this family. The genus is weakly distinguished from *Mesoraphidia* and I therefore transfer the genus to the family Mesoraphidiidae.

†*Siboptera eurydictyon* Ponomarenko

†*Siboptera eurydictyon* Ponomarenko, 1993: 71. Upper Jurassic–Lower Cretaceous, Baisa, Buryat, Russia.

†*Siboptera fornicata* (Ren)

†*Liaoraphidia fornicata* Ren, 1994: 133. Lower Cretaceous, Beipiao, Liaoning, China.

†*Siboptera fornicata* (Ren); Ren, 1997: 177.

†*Siboptera medialis* Ponomarenko

†*Siboptera medialis* Ponomarenko, 1993: 73. Upper Jurassic–Lower Cretaceous, Baisa, Buryat, Russia.

Genus †*Sinoraphidia* Hong

†*Sinoraphidia* Hong, 1982: 154. Type species: †*Sinoraphidia viridis* Hong, 1982, monobasic and original designation.

COMMENTS: Hong (1992a, 1992b) presented a revised figure for the venation of *Sinoraphidia* in which the venation was changed not in minor details but dramatically! Owing to the fanciful illustrations frequently provided by this author for various taxa when compared to photographs of the same specimens and his general inability to identify most insects (e.g., Prototabanidae described by Hong [1982] as a horsefly is a homopteran! see Grimaldi [1990]), the peculiarities of this genus must be considered dubious at best. From the available evidence this is without doubt a mesoraphidiid, although its position within this family is uncertain.

†*Sinoraphidia viridis* Hong

†*Sinoraphidia viridis* Hong, 1982: 154. Upper Jurassic–Lower Cretaceous, Gansu, China.

Genus †*Xuraphidia* Hong

†*Xuraphidia* Hong, 1992c: 3. Type species: †*Xuraphidia liaoxiensis* Hong, 1992c, original designation.

COMMENTS: This genus is likely a synonym of *Mesoraphidia* or perhaps even *Baisoraphidia*.

†*Xuraphidia liaoxiensis* Hong

†*Xuraphidia liaoxiensis* Hong, 1992c: 4. Lower Cretaceous, Kezuo, Liaoning, China.

†PRISCAENIGMATIDAE, new family

TYPE GENUS: †*Priscaenigma* Whalley, 1985.

DIAGNOSIS: I agree with Willmann (1994) that this group differs fundamentally from all other families of Raphidioptera and is perhaps the adelphotaxon of the remainder of the order. The family retains traits with Megaloptera and also some Neuroptera, particularly in features of the subcosta. In the forewing Sc extends nearly to the wing apex before fusing with R, a condition identical to that state seen in the Megaloptera and some Neuroptera. In all other Raphidioptera Sc meets with C near the wing midpoint and may some-

times bend back to fuse with R as a short cross-vein (frequently just proximad the pterostigma). In the hind wing, however, the typical raphidiopteran condition of Sc terminating into C is exhibited (observable in *Hondelagia*). The priscaenigmatids likely share with Baissopteridae the plesiomorphic retention of numerous distal cross-veins, however, the exact homologization of such an attribute requires clarification and is quite problematic. Other features of the family include the simple CuP, the absence of a distinct, ovoid, basal cell between A1 and A2 in the forewing, a narrow costal area, and Rs + M separating from the stem of R together.

Owing to a combination of their presumed phylogenetic position and highly distinctive traits, the priscaenigmatids are here segregated into a separate suborder, the Priscaenigmatomorpha (**new suborder**). The diagnosis of the suborder is identical to that of the family.

Genus †*Hondelagia* Bode

†*Hondelagia* Bode, 1953: 269. Type species: †*Hondelagia reticulata* Bode, 1953, monobasic and original designation.

†*Hondelagia reticulata* Bode

†*Hondelagia reticulata* Bode, 1953: 269. Lower Jurassic (Liassic), Germany.

†*Mesoraphidia reticulata* (Bode); Oswald, 1990: 162.

COMMENTS: Bode (1953) originally placed this species in Mantispidae but it was subsequently referred to Raphidioptera by Lambkin (1986).

Genus †*Priscaenigma* Whalley

†*Priscaenigma* Whalley, 1985: 148. Type species: †*Priscaenigma obtusa* Whalley, 1985, monobasic and original designation.

†*Priscaenigma obtusa* Whalley

†*Priscaenigma obtusa* Whalley, 1985: 148. Lower Jurassic (Liassic), England.

Family RAPHIDIIDAE Latreille

Genus *Ohmella* H. Aspöck and U. Aspöck

†“*Ohmella*” *coffini* Nel

†*Ohmella coffini* Nel, 1993: 100. Upper Miocene, Ardèche, France.

Genus *Raphidia* Linnaeus

Raphidia Linnaeus, 1758: 552. Type species: *Raphidia ophiopsis* Linnaeus, 1758, monobasic.

†*Megaraphidia* Cockerell, 1907: 607. Type species: †*Megaraphidia elegans* Cockerell, 1907, monobasic.

†*Archiraphidia* Handlirsch, 1910: 103. Type species: †*Inocellia tumulata* Scudder, 1890, monobasic.

†*Dictyoraphidia* Handlirsch, 1910: 103. Type species: †*Inocellia veterana* Scudder, 1890, monobasic.

Raphidia (*Nigroraphidia*) H. Aspöck and U. Aspöck, 1968a: 58. Type species: *Raphidia palaeiformis* H. Aspöck and U. Aspöck, 1968a, original designation.

Raphidia (*Pretzmannia*) H. Aspöck and U. Aspöck, 1968a: 59. Type species: *Raphidia euxina* Navas, 1915b, monobasic and original designation.

Raphidia (*Aserbeidshanoraphidia*) H. Aspöck and U. Aspöck, 1968b: 90. Type species: *Raphidia nuchensis* H. Aspöck, U. Aspöck, and Martynova, 1968, monobasic and original designation.

COMMENTS: The genus *Raphidia* as it is currently understood is restricted to the Old World although many of the species listed below are from North America. The North American compression fossils could potentially be placed in *Agulla*, however, in the absence of information from characters other than wing venation such an assignment cannot be made with confidence. Carpenter (1936) believed that the proximal separation of M in the hind wing precluded the compression fossil species from *Agulla*, but in fact this is not the case and the position of the separation of M blends perfectly across the species of *Agulla* and *Raphidia* (see Aspöck et al., 1991). Similarly, the Baltic amber species *Raphidia baltica* Carpenter is perhaps not truly representative of this genus. Until a revision of these fossils can be completed, however, I have conservatively retained them all in *Raphidia* as has been done by past paleoentomologists (e.g., Carpenter, 1936, 1956, 1992; Oswald, 1990) and concomitantly considered the fossil genera *Megaraphidia*, *Archiraphidia*, and *Dictyoraphidia* as tentative junior subjective synonyms of *Raphidia*. Truly these fossils and the associated genus-group names will need to be eventually reassigned within the Raphidioptera.

†“*Raphidia*” *baltica* Carpenter

†*Raphidia baltica* Carpenter, 1956: 78. Middle Eocene (Lutetian), Baltic amber.

†“*Raphidia*” *creedei* Carpenter

†*Raphidia creedei* Carpenter, 1936: 150. Oligocene, Creede, Colorado.

†“*Raphidia*” *elegans* (Cockerell)

†*Megaraphidia elegans* Cockerell, 1907: 607. Eocene-Oligocene boundary, Florissant, Colorado.
 †*Raphidia elegans* (Cockerell); Carpenter, 1936: 146.

†“*Raphidia*” *exhumata* Cockerell

†*Raphidia exhumata* Cockerell, 1909: 73. Eocene-Oligocene boundary, Florissant, Colorado.
 †*Raphidia pulveris* Cockerell, 1914: 714. Eocene-Oligocene boundary, Florissant, Colorado.

†“*Raphidia*” *mortua* Rohwer

†*Raphidia mortua* Rohwer, 1909: 533. Eocene-Oligocene boundary, Florissant, Colorado.

†“*Raphidia*” *tranquilla* Scudder

†*Raphidia tranquilla* Scudder, 1890: 154. Eocene-Oligocene boundary, Florissant, Colorado.
 †*Inocellia somnolenta* Scudder, 1890: 157. Eocene-Oligocene boundary, Florissant, Colorado.
 †*Archiraphidia tranquilla* (Scudder); Handlirsch, 1910: 103.

†“*Raphidia*” *tumulata* (Scudder)

†*Inocellia tumulata* Scudder, 1890: 158. Eocene-Oligocene boundary, Florissant, Colorado.
 †*Inocellia eventa* Scudder, 1890: 160. Eocene-Oligocene boundary, Florissant, Colorado.
 †*Archiraphidia tumulata* (Scudder); Handlirsch, 1910: 103.

†*Archiraphidia eventa* (Scudder); Handlirsch, 1910: 103.

†*Raphidia tumulata* (Scudder); Carpenter, 1936: 149.

†“*Raphidia*” *veterana* (Scudder)

†*Inocellia veterana* Scudder, 1890: 156. Eocene-Oligocene boundary, Florissant, Colorado.
 †*Dictyorphidia veterana* (Scudder); Handlirsch, 1910: 104.
 †*Raphidia veterana* (Scudder); Carpenter, 1936: 145.

INCERTAE SEDIS

Genus †*Archiinocellia* Handlirsch

†*Archiinocellia* Handlirsch, 1910: 100. Type species: †*Archiinocellia oligoneura* Handlirsch, 1910, monobasic.

†*Archiinocellia oligoneura* Handlirsch

†*Archiinocellia oligoneura* Handlirsch, 1910: 100. Oligocene, British Columbia, Canada.

†*Arariperaphidia*

Martins-Neto and Vulcano

†*Arariperaphidia* Martins-Neto and Vulcano, 1989: 243. Type species: †*Arariperaphidia rochai* Martins-Neto and Vulcano, 1989, monobasic and original designation.

†*Arariperaphidia rochai*

Martins-Neto and Vulcano

†*Arariperaphidia rochai* Martins-Neto and Vulcano, 1989: 245. Lower Cretaceous, Ceará, Brazil.

Recent issues of the *Novitates* may be purchased from the Museum. Lists of back issues of the *Novitates* and *Bulletin* published during the last five years are available at World Wide Web site <http://nimidi.amnh.org>. Or address mail orders to: American Museum of Natural History Library, Central Park West at 79th St., New York, NY 10024. TEL: (212) 769-5545. FAX: (212) 769-5009. E-MAIL: scipubs@amnh.org

© This paper meets the requirements of ANSI/NISO Z39.48-1992 (Permanence of Paper).