

## Common Cockchafer

aka Maybug

*Melolontha melolontha*



## Northern Cockchafer

*Melolontha hippocastani*



The Common Cockchafer (aka May Bug) is a widespread and often abundant species in the UK, becoming scarce in Northern England and Scotland. Occurs across a wide range of habitats, often attracted to light (MV traps, house lights). Under recorded.

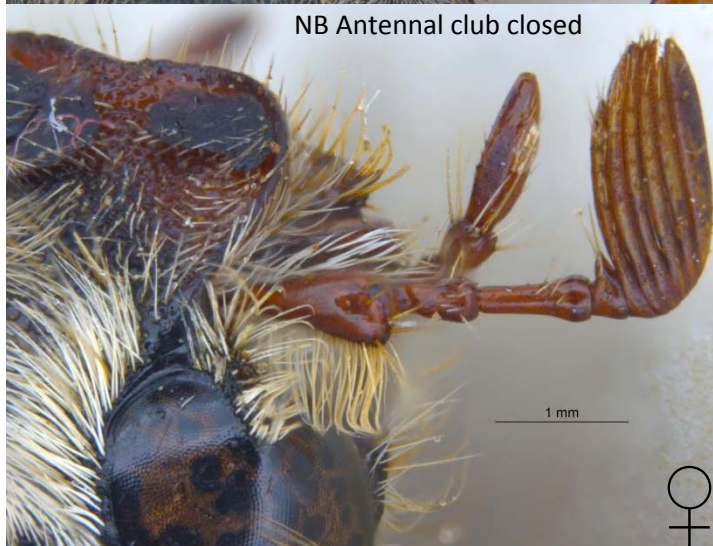
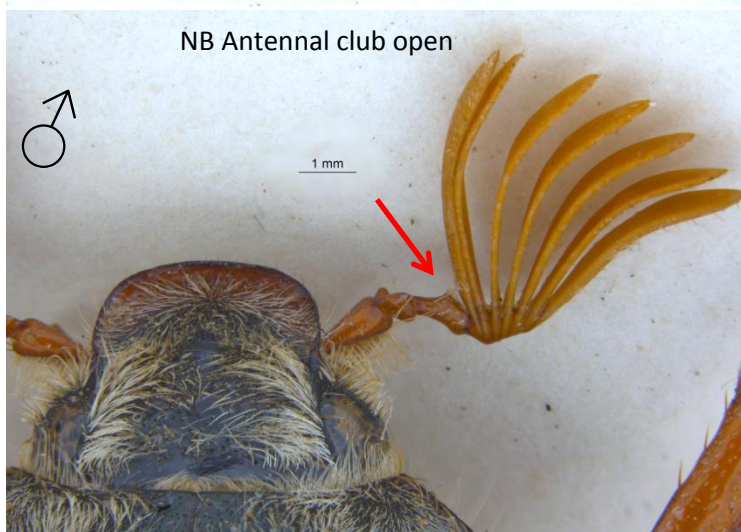
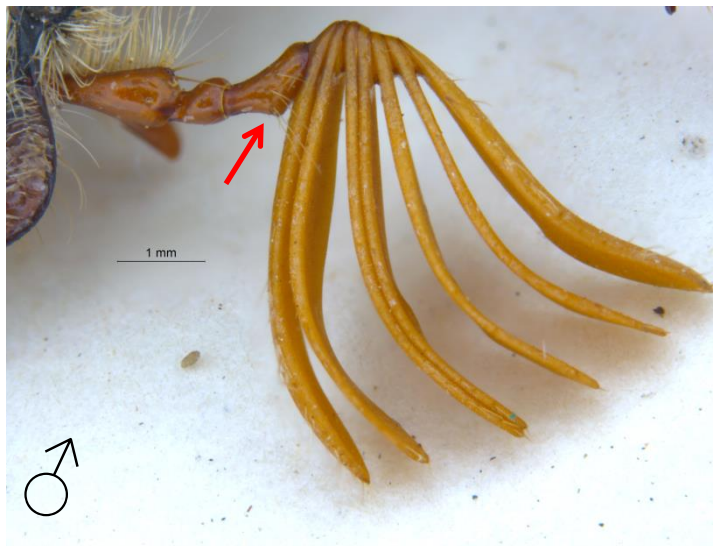
Colouration of the pronotum tends to be dark-brown, but confirmatory ID requires features of the shape of the pygidium (end of abdomen) and antennae.

The Northern Cockchafer is a Nationally Rare species restricted to Northern England, Scotland and Ireland. Most often found in woodland habitats, attracted to light (MV traps, house lights).

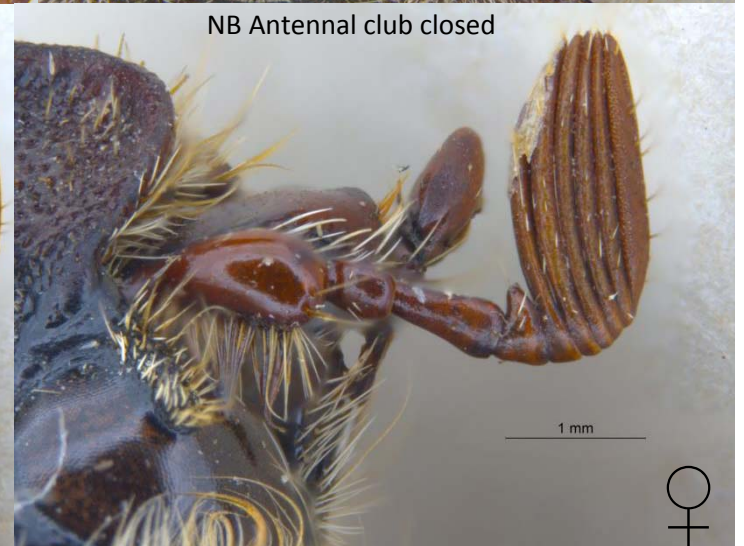
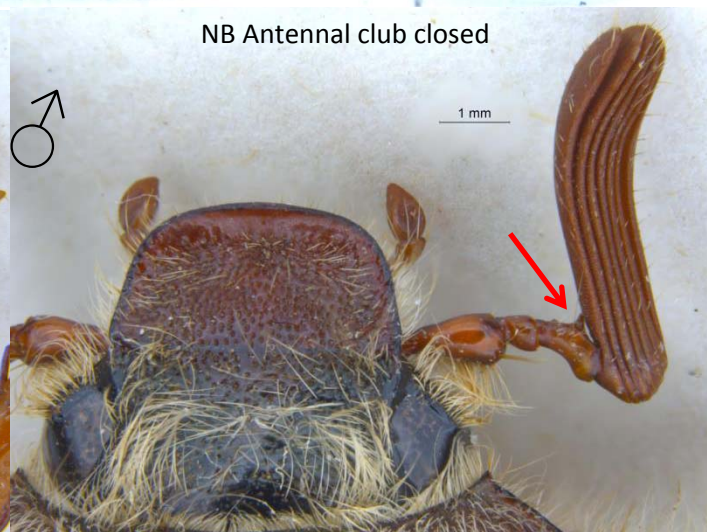
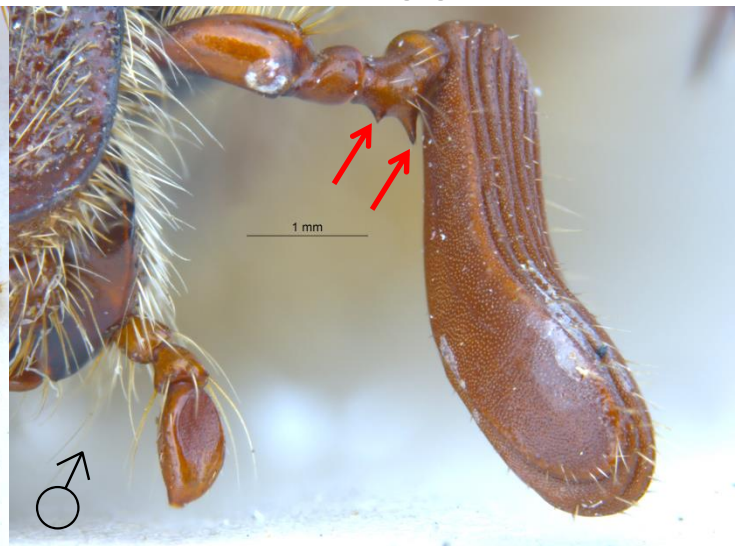
Colouration of the pronotum tends to be light brown, but confirmatory ID requires features of the shape of the pygidium (end of abdomen) and antennae.



## *Melolontha melolontha*



## *Melolontha hippocastani*



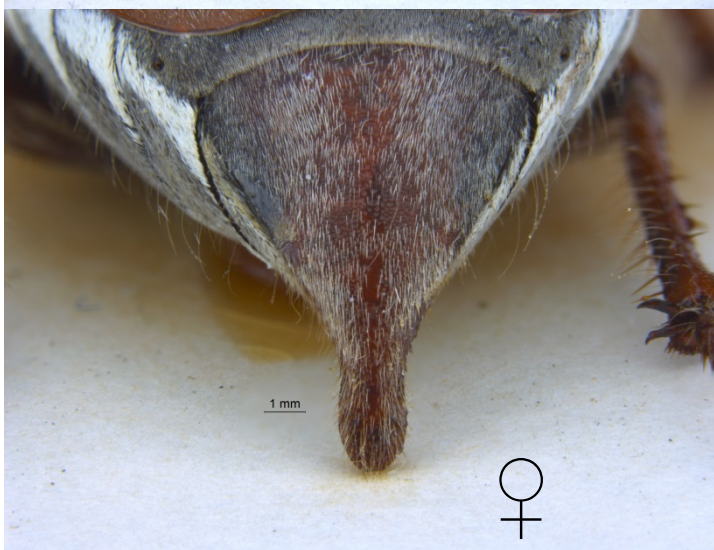
Third antennal segment in male (♂) with a small rounded bump (arrow), no distinct 'spine'. Antennal club size variable - male 2.5-5.0mm, in female 1.3-1.8mm

Third antennal segment in male (♂) with a distinct spine (arrow). Antennal club size variable, in male 3.7-4.0mm, in female 1.7-2.0mm



## *Melolontha melolontha*

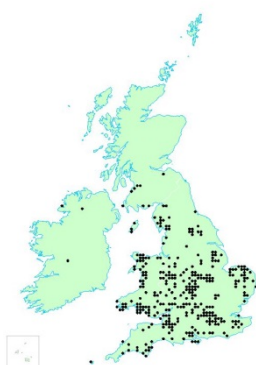
## *Melolontha hippocastani*



Pygidium lobe (bottom) long, with a slight waist before the rounded tip. Lobe longer and slightly narrower in males (♂) than in females (♀).

Pygidium lobe (bottom) short and bluntly rounded tip. Lobe longer in males (♂) than in females (♀).

Melolontha melolontha



Melolontha hippocastani



**If have seen a cockchafer, please submit records, preferably with pictures, especially of their 'bottom' to iRecord - [www.brc.ac.uk/irecord/](http://www.brc.ac.uk/irecord/)**