

# THE STORY of the WILLOW ROSE

*Matthew L. Bowser<sup>1</sup>, Miriam D. Bowser, Ethan L. Bowser,  
Apphia M. Bowser, Esther L. Bowser, and Tracy Melvin<sup>2</sup>*



↖ Image from [1]

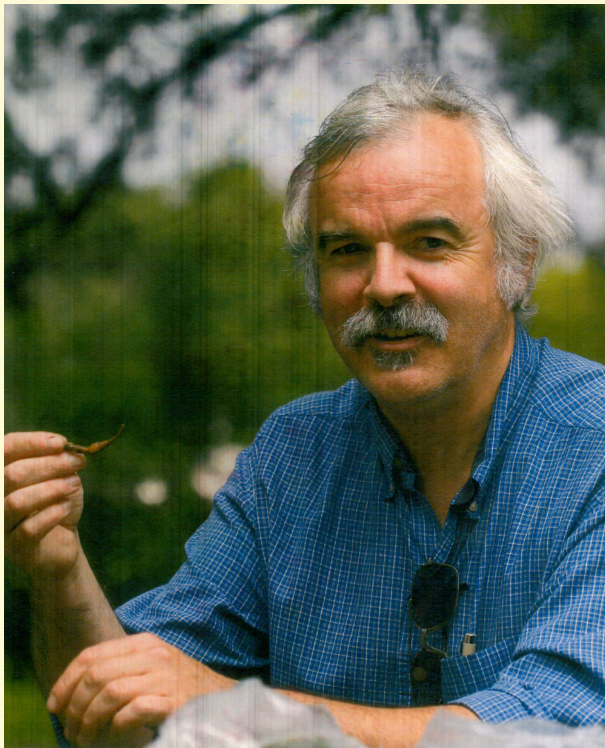
HOMER NATIVE PLANT SOCIETY MEETING • FEBRUARY 18, 2018

CENTER FOR ALASKAN COASTAL STUDIES, HOMER, ALASKA

<sup>1</sup>USFWS Kenai National Wildlife Refuge, Soldotna, Alaska, [matt\\_bowser@fws.gov](mailto:matt_bowser@fws.gov)

<sup>2</sup>Michigan State University, East Lansing, Michigan, [swemtrac@msu.edu](mailto:swemtrac@msu.edu)

*for Dominique*



# CONTENTS

Contents . . . . .	I
Natural History . . . . .	2
A Conundrum of Willow Roses . . . . .	9
To Know a Midge . . . . .	11
A Plurality of Rose Cecids . . . . .	19
Onward . . . . .	24
Acknowledgements . . . . .	25
Literature Cited . . . . .	26

# NATURAL HISTORY



*Rabdophaga rosaria*  
gall midge adult (4 mm)



Beaked gall induced by  
*Rabdophaga rigidae*



Cross section  
showing the  
orange larva

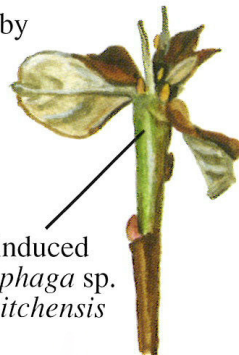
“Willow rose” induced  
by *Rabdophaga rosaria*  
on *Salix barclayi*



Cross section  
showing the  
orange larva



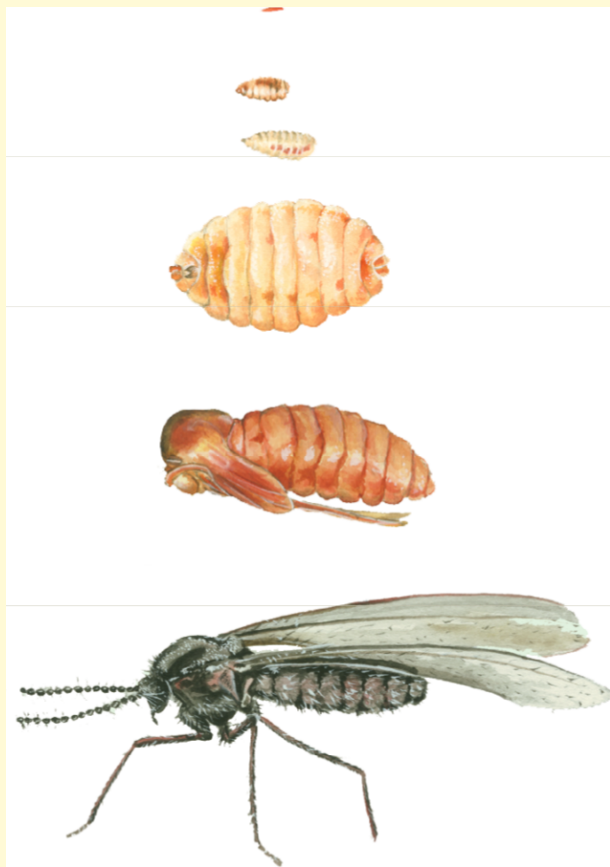
Stem swelling  
induced by  
*Rabdophaga salicis* on *Salix barclayi*



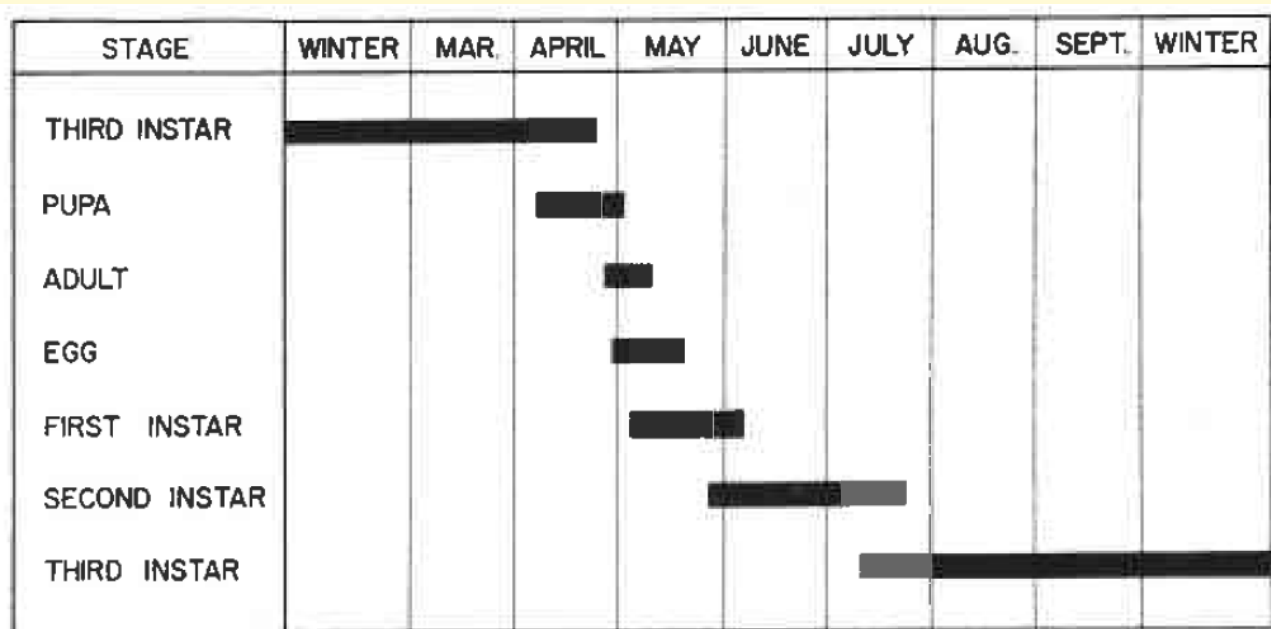
Bud gall induced  
by *Rabdophaga* sp.  
on *Salix sitchensis*

← Image from [2]





← Image from [3]

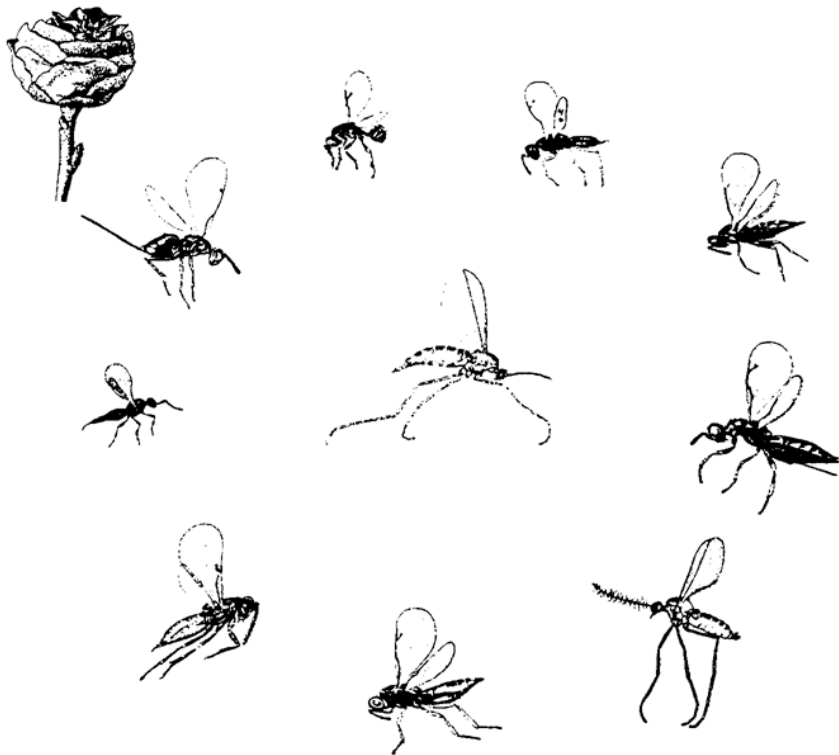


↑ Image from [4] (*Rabdophaga strobiloides*, Michigan)



← Image from [3]



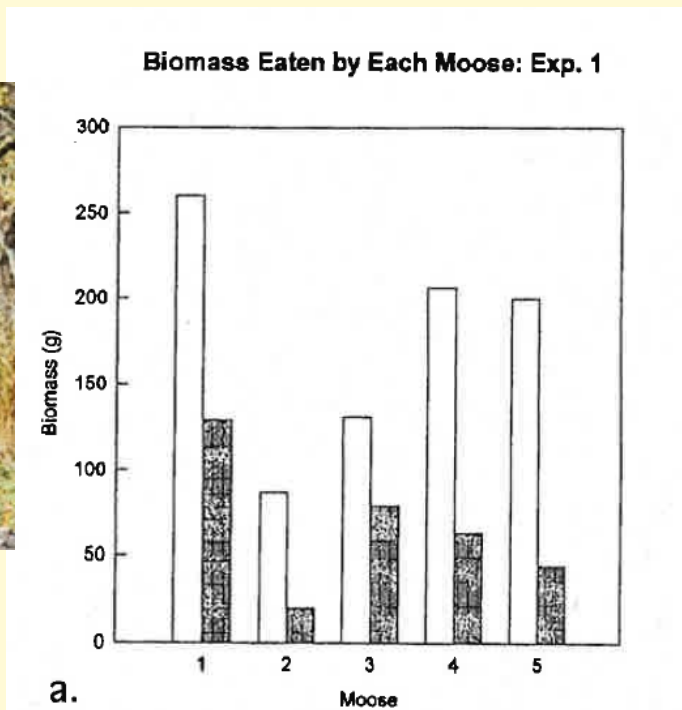


← Image from [3]

Moose avoid rose-galled stems [5].



↑ Image from [6]



↑ Image from [5]

# A CONUNDRUM OF WILLOW ROSES

## OLD WORLD

*Rabdophaga clavifex* (Kieffer, 1891)

*Rabdophaga rosaria* Loew, 1850

*Rabdophaga rosariella* (Kieffer, 1897)

*R. rosaria*



## NEW WORLD

*Rabdophaga salicibrassicoides* Packard, 1869

*Rabdophaga saliscoryloides* Osten Sacken, 1878

*Rabdophaga salicisgnaphaloides* Osten Sacken, 1878

*Rabdophaga salicisrhodoides* Osten Sacken, 1878

*Rabdophaga strobiloides* Osten Sacken, 1862

← Image from [https://commons.wikimedia.org/wiki/File:Rabdophaga\\_rosaria\\_\(Diptera\\_sp.\)\\_gall,\\_Arnhem,\\_the\\_Netherlands.jpg](https://commons.wikimedia.org/wiki/File:Rabdophaga_rosaria_(Diptera_sp.)_gall,_Arnhem,_the_Netherlands.jpg).

# A CONUNDRUM OF WILLOW ROSES

ALASKA *Rabdophaga rosaria* Group: One or More?

*S. bebbiana*



*S. barclayi*



*S. pulchra*



*S. commutata*



*S. sitchensis*

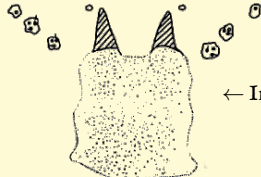


*S. richardsonii*



# To KNOW A MIDGE

- Midge morphology [1]



← Image from [1]

- Host species and gall characteristics [1]



← Image from [1]

- Breeding experiments [7,9]

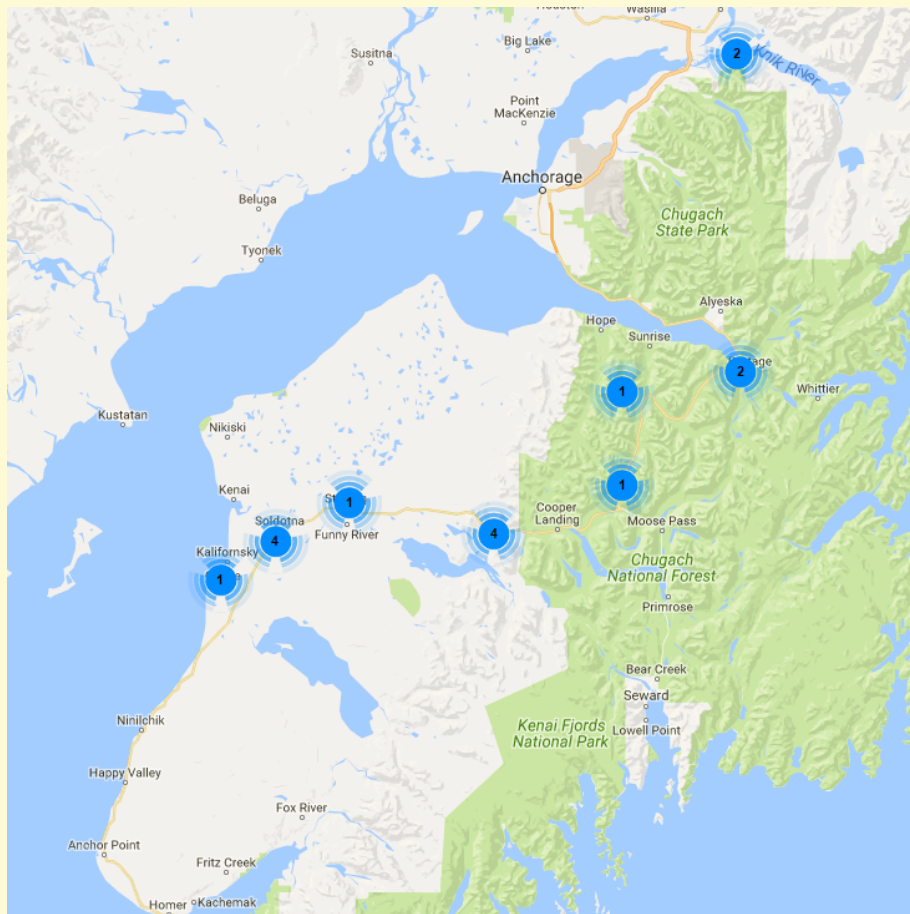
- Molecules [8]







Localities →









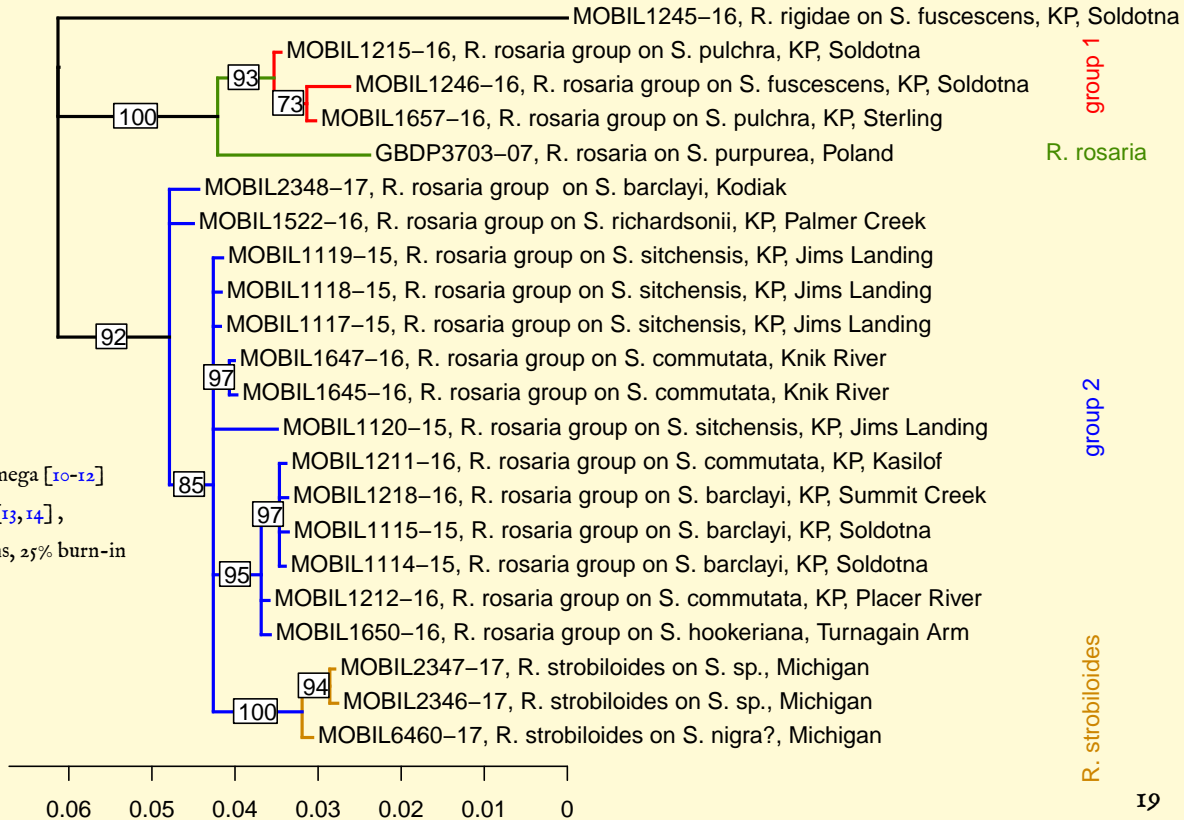


COI sequences obtained via lifescanner kits (<http://www.lifescanner.net>) ...



↑ Image from <https://pbs.twimg.com/media/CV748OZUAAEFJ-.jpg:large>.

# A PLURALITY OF ROSE CECIDS



## A PLURALITY OF ROSE CECIDS

*Rabdophaga rosaria* group 1 (BIN [15]: BOLD:ADA9342)

Close to (maybe conspecific with?) Old World *Rabdophaga rosaria*.



# A PLURALITY OF ROSE CECIDS

*Rabdophaga rosaria* group 2 (BIN: **BOLD:ACZ0652**)

*S. commutata*



*S. barclayi*



*S. hookeriana*



*S. sitchensis*



*S. richardsonii*



← Corroborates Collet's finding that the same midge parasitizes *S. barclayi* and *S. commutata* [7].

*Rabdophaga strobiloides*

Close to (maybe conspecific with?) Alaska *R. rosaria* group 2

*S. nigra* ?





Maybe less of a conundrum now?

OLD WORLD

*Rabdophaga clavifex* (Kieffer, 1891)

~~*Rabdophaga rosaria* Loew, 1850~~

*Rabdophaga rosariella* (Kieffer, 1897)

NEW WORLD

~~*Rabdophaga salicibrassicoides* Packard, 1869~~

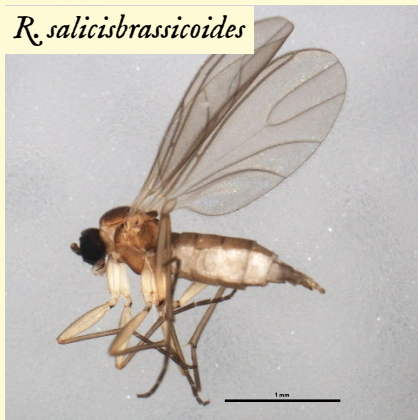
~~*Rabdophaga saliciscoryloides* Osten Sacken, 1878~~

~~*Rabdophaga salicisgnaphaloides* Osten Sacken, 1878~~

~~*Rabdophaga salicisrhodoides* Osten Sacken, 1878~~

~~*Rabdophaga strobiloides* Osten Sacken, 1862~~

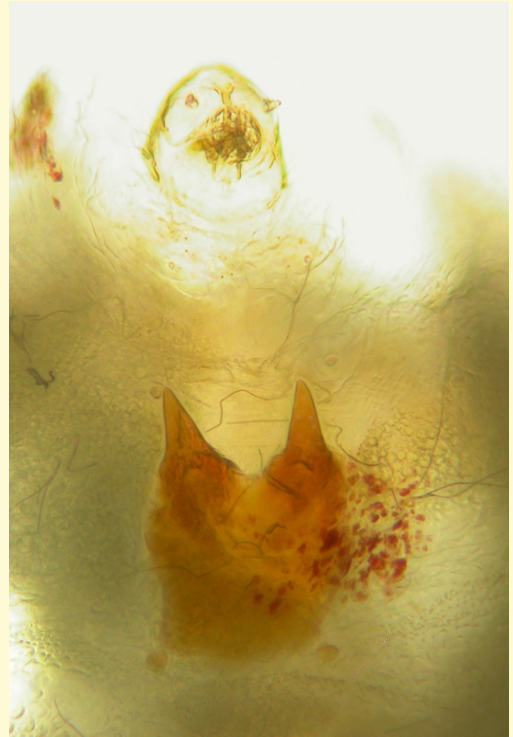
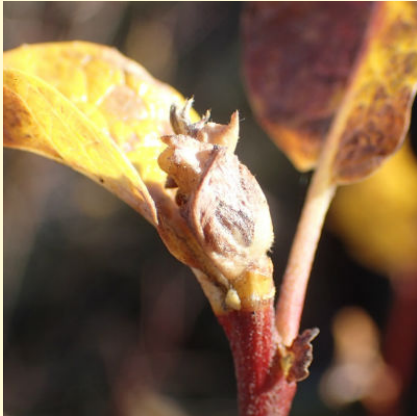
*R. salicibrassicoides*



← Image from <http://www.boldsystems.org/pics/PBCAG/bioug00974-c06%2B1301498198.jpg>.

# ONWARD

- Document morphology
- Still missing willow and midge species
- Many other gall makers to explore



# ACKNOWLEDGEMENTS

- Dominique Collet provided ideas, insight, and help with identification of willows.
- Funding for lifescanner kits was provided by USFWS [Kenai National Wildlife Refuge](#) and [Interior Distance Education of Alaska](#).
- Mariah McInnis helped collect specimens.



# LITERATURE CITED

- [1] Nijveldt WC, Yukawa J. A taxonomic study on *Salix*-inhabiting gall midges in Japan (Diptera, Cecidomyiidae). The Bulletin of Kitakyushu Museum of Natural History. 1982;4:23-56.
- [2] Collet DM. Willows of Southcentral Alaska. Soldotna, Alaska: Kenai Watershed Forum; 2002. Available from: <http://web.acsalaska.net/~kenaiwatershed.forum/willowguide.html>.
- [3] Collet DM. Genus *Rhabdophaga* and associated insects in Alaska; 2006. Available from: [http://www.akentsoc.org/doc/Collet\\_DM\\_2006.pdf](http://www.akentsoc.org/doc/Collet_DM_2006.pdf).
- [4] Wilson LF. Life history and habits of the pine willow gall midge, *Rhabdophaga strobiloides* (Diptera: Cecidomyiidae), in Michigan. The Canadian Entomologist. 1968;100(4):430-433. doi:10.4039/Ent100430-4.
- [5] Ford E, Berg E, McAvinchey R. Browsing avoidance of galled willow stems by wintering moose on the Kenai Peninsula, Alaska. Soldotna, Alaska: U.S. Fish & Wildlife Service, Kenai National Wildlife Refuge; 1995. Available from: [http://www.fws.gov/uploadedFiles/Ford\\_E\\_et\\_al\\_1995.pdf](http://www.fws.gov/uploadedFiles/Ford_E_et_al_1995.pdf).
- [6] Boylan M, editor. Kenai National Wildlife Refuge Annual Narrative Report, Calendar Year 1985. Soldotna, Alaska: U.S. Department of the Interior, Fish and Wildlife Service, National Wildlife Refuge System; 1986. Available from: <https://catalog.data.gov/dataset/kenai-national-wildlife-refuge-annual-narrative-report-calendar-year-1985>.
- [7] Collet DM. Rearing experiment to determine the willow host range of *Rhabdophaga* spp. in Alaska. Newsletter of the Alaska Entomological Society. 2010;3(1):9-11. Available from: [http://www.akentsoc.org/doc/AKES\\_newsletter\\_2010\\_I.pdf](http://www.akentsoc.org/doc/AKES_newsletter_2010_I.pdf).
- [8] Sato S, Yukawa J. Resurrection of *Rhabdophaga salicivora* Shinji (Diptera: Cecidomyiidae), a Japanese gall midge formerly misidentified as a North American species, *Rhabdophaga rigidae* (Osten Sacken), with observations on the phylogenetic relationships of its populations in Japan and the Russian Far East. Entomological Science. 2006;9(4):423-434. doi:10.1111/j.1479-8298.2006.00188.x.
- [9] Smith FF, Webb RE, Argus GW, Dickerson JA, Everett HW. Willow beaked-gall midge, *Mayetiola rigidae* (Osten Sacken), (Diptera: Cecidomyiidae): differential susceptibility of willows. Environmental Entomology. 1983;12(4):1175-1184. doi:10.1093/ee/12.4.1175.
- [10] Goujon M, McWilliam H, Li W, Valentin F, Squizzato S, Paern J, et al. A new bioinformatics analysis tools framework at EMBL-EBI. Nucleic Acids Research. 2010;38(suppl\_2):W695-W699. doi:10.1093/nar/gkq313.
- [11] Sievers F, Wilm D, Dineen D, Gibson TJ, Karplus K, Li W, et al. Fast, scalable generation of high-quality protein multiple sequence alignments using Clustal Omega. Molecular Systems Biology. 2011;7(1):539. doi:10.1038/msb.2011.75.
- [12] McWilliam H, Li W, Uludag M, Squizzato S, Park YM, Buso N, et al. Analysis Tool Web Services from the EMBL-EBI. Nucleic Acids Research. 2013;41(W1):W579-W600. doi:10.1093/nar/gkt376.
- [13] Huelsenbeck JP, Ronquist F. MRBAYES: Bayesian inference of phylogenetic trees. Bioinformatics. 2001;17(8):754-755. doi:10.1093/bioinformatics/17.8.754.

## LITERATURE CITED

- [14] Ronquist F, Huelsenbeck JP. MrBayes 3: Bayesian phylogenetic inference under mixed models. *Bioinformatics*. 2003;19(12):1572-1574. doi:10.1093/bioinformatics/btgi80.
- [15] Ratnasingham S, Hebert PDN. A DNA-Based Registry for All Animal Species: The Barcode Index Number (BIN) System. *PLoS ONE*. 2013;8(7):e66213. doi:10.1371/journal.pone.0066213. Available from: <http://dx.doi.org/10.1371%2Fjournal.pone.0066213>.