

360 Great Reed Warbler

Put your logo here



Great Reed Warbler. Spring (26-IV).

GREAT REED WARBLER (*Acrocephalus arundinaceus*)

IDENTIFICATION

17-20 cm. Brown upperparts; white-reddish underparts; white throat and supercilium; brown tail; grey bluish legs.



Great Reed Warbler. Pattern of head and upperparts.



SIMILAR SPECIES

Similar to **Reed Warbler**, which is smaller (13-14 mm).



Reed Warbler

SEXING

Plumage of both sexes alike.

AGEING

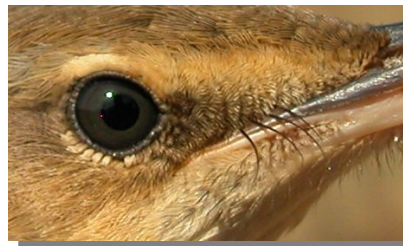
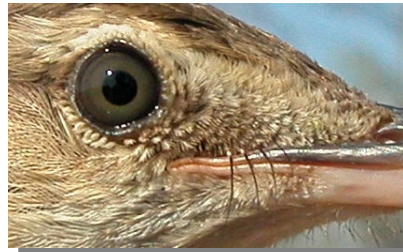
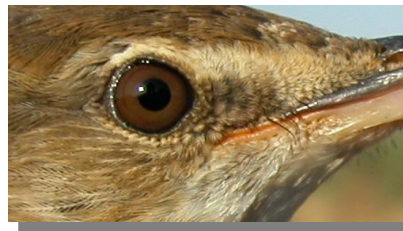
3 types of age can be recognized:

Juvenile with fresh feathers (check flight feathers and tail); iris dark grey; two black spots on tongue.

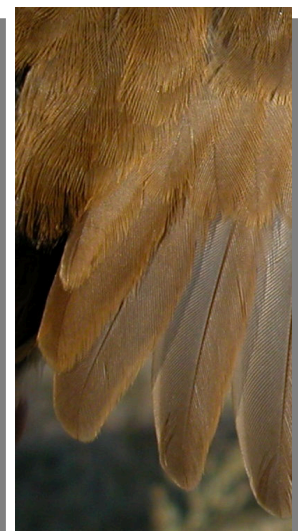
2nd year only in some birds with brown-olive iris.

Adult in autumn with worn plumage; iris reddish-brown; tongue without black spots.

In **spring**, after the **prebreeding** moult, ageing is not possible using plumage pattern.



Great Reed Warbler. Ageing. Colour of iris: top adult; middle 2nd year; bottom juvenile.



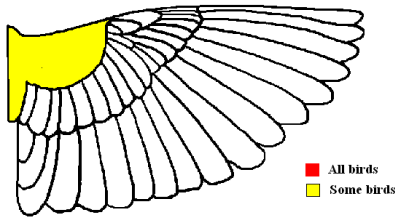
Great Reed Warbler. Ageing. Wear of tertials: left adult; right juvenile.

360 Great Reed Warbler

Put your logo here

MOULT

Partial **postbreeding** and **postjuvenile** moults, including body feathers and lesser and median wing coverts; sometimes some greater coverts and central pair of tail feathers. Both types of age have a complete **prebreeding** moult in wintering quarters.



Great Reed Warbler. Extent of postjuvenile moult.

■ All birds
■ Some birds

PHENOLOGY

I	II	III	IV	V	VI	VII	VIII	IX	X	XI	XII

STATUS IN ARAGON

Summer visitor. Breeds in marshlands of the Ebro valley.



Great Reed Warbler. Autumn. Adult (27-VIII).



Great Reed Warbler. Autumn. Juvenile (27-VIII).



Great Reed Warbler. Iris colour: top adult (27-VIII); middle 2nd year (02-VII); bottom juvenile (27-VIII).



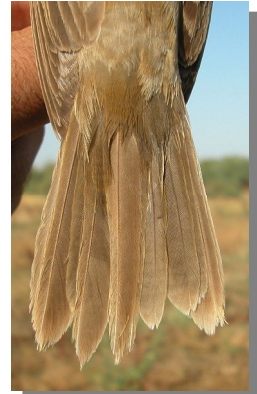
Great Reed Warbler. Breast pattern: top left in spring (26-IV); top right adult in autumn (27-VIII); left juvenile (15-VII).



Great Reed Warbler. Legs colour: left adult (28-IV); right juvenile (15-VII).

360 Great Reed Warbler

Put your logo here



Great Reed Warbler. Tail wear: top left in spring (25-IV); top right adult in autumn (27-VIII); left juvenile (27-VIII).



Great Reed Warbler. Upperpart pattern: top left in spring (26-IV); top right adult in autumn (27-VIII); left juvenile (31-VIII).



Great Reed Warbler. Spring: pattern of wing (26-IV).



Great Reed Warbler. Autumn. Adult: pattern of wing (27-VIII).

360 Great Reed Warbler

[Put your logo here](#)



Great Reed Warbler. Autumn. Juvenile: pattern of wing (31-VIII).